



Portsea SLSC Bay to Surf 2026 Race Information

The second annual Portsea SLSC Bay to Surf is fast approaching. This page provides important information for entrants to help everyone complete a safe and successful event.

Event Start Area

The Bay to Surf start area is located at Jarman Oval, Quarantine Station within the Point Nepean National Park.

Car Parking

Car parking will be available on Jarman Oval near the event starting area. **A parking fee of \$5 (CASH ONLY)** is required which will be donated to support local emergency services organisations. All competitors will be directed to the Registration Tent on arrival.

Buses will be running between Jarman Oval and the Portsea SLSC clubhouse to ferry competitors and spectators to and from their vehicles. The first bus will depart Jarman Oval at 4:45pm and the last bus will depart Portsea SLSC at 9:00pm.

Registration

All entrants are required to register at the start area at the allocated time. This includes entrants who have pre-registered and those who enter the event on the day.

Pre-registered competitors will be sent an individual code that they must bring with them, either on their phone or printed out, prior to the event. Competitors will scan their individual code when they approach the registration tent. Competitors will then receive their race bib.

On-day race entry will be available at the starting area via QR code, so a smartphone will be required. Payment can be made on the day by cash or credit card.



Race Information

Race times:

Event	Start Time	Registration Opens	Registration Closes
4.5km walk	5:00pm	4:00pm	4:45pm
4.5km run	6:00pm	5:00pm	5:45pm
9km run	6:15pm	5:15pm	6:00pm

On the beach, all entrants must keep to the water's edge as there are active hooded plover breeding sites on the upper part of the beach.

We ask that event participants follow the directions of marshals and race volunteers and treat all race officials with patience and respect.

Bag transport will be available to move competitors' personal items from the start area to the finish area at the Portsea SLSC clubhouse.

Water will be provided at the race start and at the race finish.

Race T-shirts will be available to competitors directly after the race in the forecourt of the Portsea SLSC clubhouse.

Please deposit all used water bottles and cups in the bins provided in front of the Portsea SLSC clubhouse. Bins and rubbish are not permitted on the beach.

Presentations

Presentations will be made at the Portsea SLSC clubhouse after the race.

Awards will be made for first, second and third placegetters in both the 4.5km and 9km run events. There will be no placegetter awards in the walking event.

Separate categories will be provided for male and female placegetters in both over-18 and under-18 age groups.

Places will be determined according to the competitor whose torso crosses the finish line first as judged by the finish line officials. Recorded times will not determine placegetters. All decisions of the Race Director are final.



**PORTSEA
SURF LIFE
SAVING CLUB**

Post-Race Food and Entertainment

Portsea SLSC will be operating a Pizza and Pasta service and the bar will be in operation. Non-members must be signed in as guests by a Portsea SLSC member.

The Portsea SLSC Bay to Surf Committee thanks you for supporting the 2026 Portsea SLSC Bay to Surf and helping to make it a roaring success!

2026 PORTSEA BAY TO SURF SPONSORS & PARTNERS

MAJOR SPONSORS



SILVER SPONSORS



BRONZE SPONSORS



EVENT PARTNERS

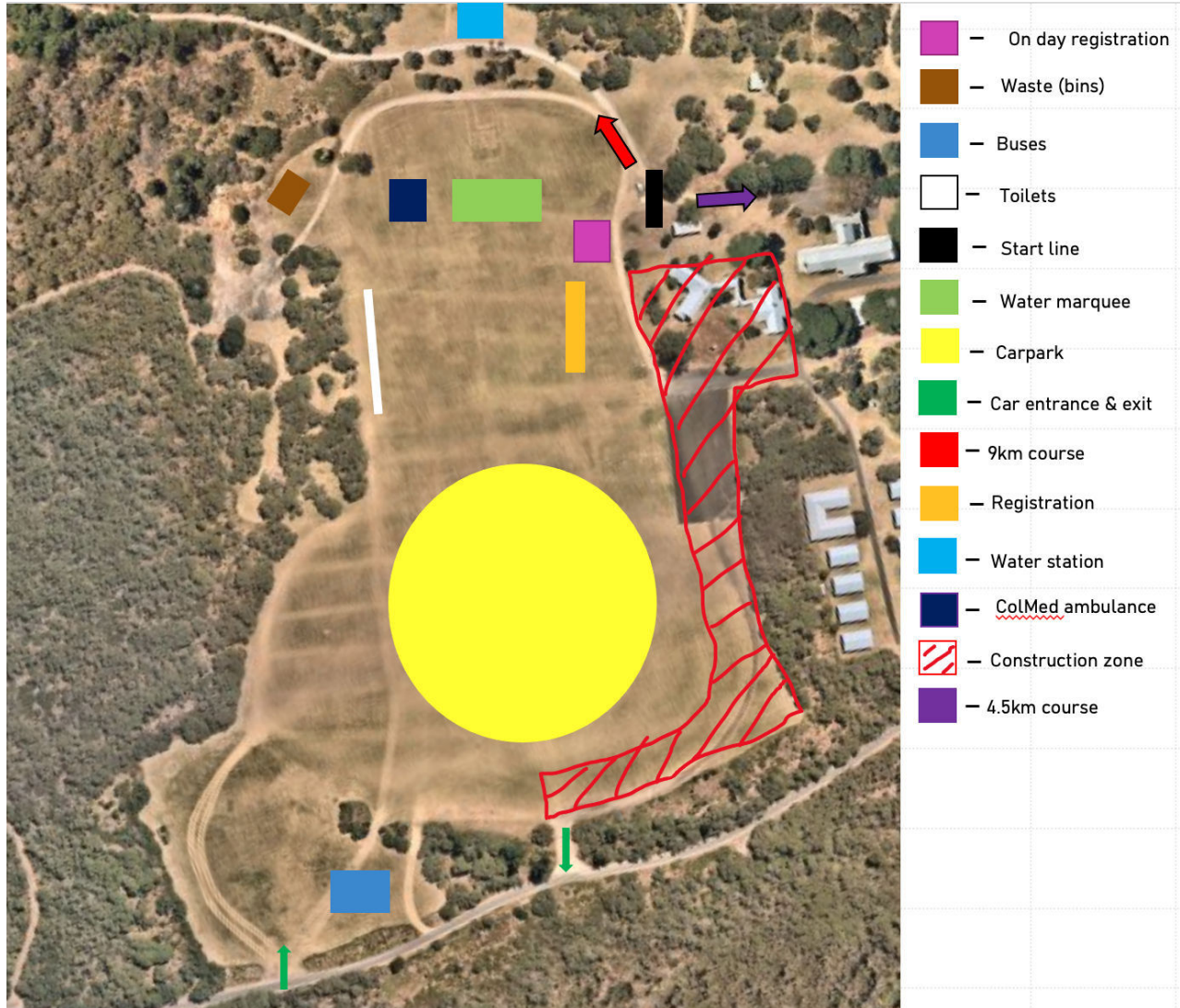




**PORTSEA
SURF LIFE
SAVING CLUB**

PORTSEA BAY TO SURF 2026 - SITE PLAN

BAY TO SURF SITE PLAN, QUARANTINE STATION, PT NEPEAN, PORTSEA



BAY TO SURF SITE PLAN, PORTSEA SLSC, PORTSEA



**PORTSEA
SURF LIFE
SAVING CLUB**

- Bar (under deck)
- Food trucks
- Presentations (on deck)
- Bunting (crowd barrier)
- Water station
- Merch collection (equipment room)
- Finish line



PORTSEA BAY TO SURF 2026 - COURSE MAPS



The Portsea Bay to Surf 4.5km adventure walk

Competitors will start at Jarman oval and walk along the track abutting Ochiltree Road then the track abutting Defence Road. Competitors will then move onto Wilson's Folly Track and then finally progress along the picturesque Portsea Back Beach from London Bridge to Portsea SLSC.

The Portsea Bay to Surf 4.5km adventure run

Competitors will start at Jarman oval and run along the track abutting Ochiltree Road then the track abutting Defence Road. Competitors will then move onto Wilson's Folly Track and then finally bring it home along Portsea Back Beach from London Bridge to Portsea SLSC.

The Portsea Bay to Surf 9km adventure run

Competitors will start at Jarman oval and head towards Fort Nepean before joining Coles Track and heading back to Quarantine Station. Next, along the track abutting Ochiltree Road then the track abutting Defence Road. Competitors will then move onto Wilson's Folly Track and then finally bring it home along Portsea Back Beach from London Bridge to Portsea SLSC.

There will be two water station on the 9km course and one water station on the 4.5km course.