



PSLSC Swim Classic 2022 Race Information

Competitors and volunteers are advised to regularly check the Swim Classic website for any updates.

THIS DOCUMENT DUE TO CURRENT CONDITION IS SUBJECT TO CHANGE – PLEASE DO FINAL CHECK FRIDAY NIGHT

All instructions relating to the race (COVID19 responsibilities & new system) are below.

The Swim Classic Committee appreciate that this year the swim will once again throw up a range of additional challenges. We will be implementing a range of critical changes utilized during the 2021 event and also incorporating some new additions that came out of an extensive overview of what we did and also in light of the current state of the COVID19 outbreak.

Please read and familiarise yourself with the new arrangements.

For the Portsea Swim Classic 1500M there will be a minimum 5-minute gap between each swim wave.

The event has been slit into three groups with a 15minute break between groups

Everyone attending the Portsea Swim Classic is required to comply with the COVID19 Safe requirements we implement on the day. PLEASE NOTE- these may be stricter than the stated DHHS standards at the time. THIS IS FOR YOUR SAFETY!

We request everyone attending to supply their own disposable face mask please. We will have a supply as back up only.

No mask means no travel on the bus.

As stated in the race information Swimmers 16 years and over will be required to show proof of vaccination when collecting their transponder

- PSLSC reserves the right to withdraw any swimmer from the race if they do not comply with the events COVID19 Safe instructions. If this occurs, no refund will be made.
- **People not swimming on day are discouraged from attending the event this year.** We apologise for this inconvenience and we look forward to welcoming the wider community to future events within a COVID19 free environment.



Summary of Main Points for Competitors

- Bring QR Code (phone or print) that will be supplied to you via email on the 13th January
 - It is preferable that it is printed
- Race Kits can be collected from the PSLSC from 4.30pm to 6.00pm Thursday 13th January
- Bring a disposable mask
- Check-in using the row that has been allocated to your Race Number – “Collection Row”
- You **do not** receive your merchandise bag at time of registration, you will only receive an envelope with:
 - Disposable Transponder
 - Bag Tag (same number as transponder)
 - Swimming Cap – Allocated cap colour
- Swimmer’s competitor number is the same for
 - ID, Transponder and Bag Tag
- Due to changes you will not have the Blazer bag to store things prior to the race so please ensure you have your own bag
- Comply with COVID19 Plan
 - maintain social distancing
 - use sanitiser
 - wear a mask
- Masks **must be worn** on transport, in line, and at marshalling area at the start line.
- Masks to be dispensed of in bins provided (situated after you cross the start mat)
- All personal bags being stored by race organisers must be tagged with bag tag provided. (Bags left at swimmers’ own risk).
- Collection of bags must occur directly after the race (exception for swimmers who are registered in both the Gold and 1500 metre swim).
- Transponders must be kept on until after collecting bag from Merchandise Tent. (Swimmers will walk over a mat for final scan which allows collection).
- **Transponder number is the same as your Bag Tag** number and is your ticket for collection of your bag
- CAR PARK FEE \$5
- BUS FEE FROM SORRENTO FERRY \$5 Each Way

You need to ensure you fully understand the above information and read the following information and ensure you understand the changes made to this year’s event

- Competitors should minimize time at the event
- WHEN IN DOUBT ASK
- **VERY IMPORTANT – PLEASE RESPECT ALL OF THE VOLUNTEERS ON THE DAY**



WAVE TIMES:

Wave	Description	Time
GOLD	2500m Open Event	12.5
500m Events		
1	TRIBE 1	12.3
J1	Junior - 10 and Over Male	12.35
J2	Junior - 10 and Over Female	12.4
J3	Junior Under 10 Mixed	12.45
BREAK		
1500m Swim Classic - Group 1		
1	Youth Male	2.25
2	Youth Female	2.30
3	Open Men	2.35
4	Open Women	2.40
5 M1	MIXED 1	2.45
Pause - Group 2		
6 M2	MIXED 2	3.00
7	30-39 MALE FAST	3.05
8	30-39 FEMALE	3.10
9	40-49 MALE FAST	3.15
10	40-49 FEMALE FAST	3.20
11	40-49 MALE	3.25
Pause - Group 3		
12	50-59 MALE FAST	3.40
13	50-59 FEMALE	3.45
14	50-59 MALE	3.50
15	60-69 MALE	3.55
16	60-69 FEMALE	4.00
17	70+	4.05

Unforeseen changes may alter the stated wave times



2022 PSLSC Swim Classic Running Sheet	
Classification	Group 1 - Youth (Junior 12-17), Open, Mixed 1 (14.25) Group 2 - 30-39, 40-49 Mixed 2 (15.00) Group 3 - 50-59, 60-69 and 70+ (15.40)
Merchandise	WILL BE AVAILABLE FOR COLLECTION AT COMPLETION OF EACH EVENT
Registration	Registration for a wave closes 45 mins prior to event
Buses	First call for each swim group (1-3) will commence 75 mins before first wave in a group (1 - 13.10), (2 - 13.45), (3, 14.25)
	Will commence staggered departure for each swim group (1-3) 60 mins before Group commences
TIME	DESCRIPTION
9.00	All AV and Communications confirmed operational
9.30	Car Park Open
10.00	Registration commences on Jarman Oval
11.30	First call for swimmers to marshal at bus for Portsea Swim Classic Gold 2.5km
11.45	Registration for Junior and Tribe Closes
11.50	Buses leave Portsea Swim Classic Gold 2.5km
11.50	First call for swimmers to marshal at parade ground – Junior (500metre race) / Tribe (Teams 500m race)
12.05	Registration for Gold Closes
12.30	Race starts Portsea Swim Classic Tribe -Parade Ground Beach
12.35 - 12.45	Race starts Portsea Swim Classic Junior -Parade Ground Beach
13.10	First call for swimmers to marshal at bus ie. Youth (Junior 12-17), Open, Mixed 1 Age Groups (Group 1)
13.15	Presentations for Tribe and Junior event winners
13.25	Buses commence departure for: Youth (Junior 12-17), Open, Mixed 1 Age Groups (Group 1)
13.45	First call for swimmers to marshal at bus ie. 30-39, 40-49, Mixed 2 - (Group 2)
14.00	Buses commence departure for: 30-39, 40-49, Mixed 2 - (Group 2)
14.25	First call for swimmers to marshal at bus ie. 50-59, 60-69, 70+ Age Groups (Group 3)
14.40	Buses commence departure for: 50-59, 60-69, 70+ Age Groups (Group 3)
15.20	Registration closes
15.30	Last Bus Departs
15.30	Presentations for Youth and Open Age Classes commence
16.05	Presentations for 30-39 AND 40-49 Age Classes commence
16.50	Presentations for 50-59, 60-69 AND 70+Age Classes commence



SWIM CLASSIC 2.5KM "GOLD" - Junior and Tribe RACE TIME GUIDES		
TIME	WAVE DETAILS	CAP COLOUR
12.30	TRIBE COMMENCES	FLURO PINK
12.35	JUNIOR 10-13 MALE RACE COMMENCES	FLURO GREEN
12.40	JUNIOR 10-13 FEMALE RACE COMMENCES	FLURO YELLOW
12.45	JUNIOR UNDER 10 MIXED RACE COMMENCES	FLURO GREEN (MALE) FLURO YELLOW (FEMALE)
12.50	2.5KM - GOLD PORTSEA CLASSIC COMMENCES	GOLD
SWIM CLASSIC 1500M RACE TIME GUIDES		
TIME	WAVE DETAILS	CAP COLOUR
GROUP 1 RACES COMMENCE		
14.25	WAVE 1 - YOUTH FEMALE RACE COMMENCES	FLURO PINK
14.30	WAVE 2 - YOUTH MALE RACE COMMENCES	NAVY
14.35	WAVE 3 - OPEN FEMALE - RACE COMMENCES	SKY BLUE
14.40	WAVE 4 - OPEN MALE GENERAL - RACE COMMENCES	RED
14.45	WAVE 5 M1 - "MIXED 1" - RACE COMMENCES	FLURO YELLOW
GROUP 2 RACES COMMENCE		
15.00	WAVE 6 M2 - "MIXED 2" - RACE COMMENCES	FLURO GREEN
15.05	WAVE 7 - 30-39 MALE RACE COMMENCES	BLACK
15.10	WAVE 8 - 30-39 FEMALE RACE COMMENCES	WHITE
15.15	WAVE 9 - 40-49 MALE "FAST" RACE COMMENCES	SILVER
15.20	WAVE 10 - 40-49 FEMALE RACE COMMENCES	PINK
15.25	WAVE 11 - 40-49 MALE RACE COMMENCES	ORANGE
GROUP 3 RACES COMMENCE		
15.40	WAVE 12 - 50-59 MALE "FAST" RACE COMMENCES	ROYAL BLUE
15.45	WAVE 13 - 50-59 FEMALE RACE COMMENCES	FLURO PINK
15.50	WAVE 14 - 50-59 MALE GENERAL RACE COMMENCES	PURPLE
15.55	WAVE 15 - 60-69 MALE RACE COMMENCES	RED
16.00	WAVE 16 - 60-69 FEMALE RACE COMMENCES	SKY BLUE
16.05	WAVE 17 - 70+ RACE COMMENCES (MIXED)	FLURO GREEN (MALE) FLURO YELLOW (FEMALE)
16.50	COURSE CLEARED	
17.00 HRS OR 5 P.M - SWIM CLASSIC 1500M COMPLETED		



Symptom Self-assessment

Swimmers:

- Swimmers must understand that it is mandatory for them to have completed a symptom self-assessment prior to arrival at the event and entering the venue.

Volunteers:

- All instructions relating to the race (COVID19 responsibilities & new system) will be posted on the website and emailed out to volunteers prior to the event.
- Face masks will be available for any volunteer who does not have one.
- Volunteers must use hand sanitiser regularly as instructed on the day.
- There will be manual self-assessment forms and tracking sheets available as an emergency back-up due to unforeseeable circumstances.

External Services:

- All external services are required to have completed a symptom self-assessment prior to arrival at the event and will need to comply with Government regulations relevant as of the day of the event.

There will be COVID19 Operations Practitioners on-site to monitor COVID19 compliances and assist where practicable.

Competitors Race Number and Access Details required at collection

All competitors will be sent an individual code and information document that **they must** bring with them, either on their phone or printed out. This document includes the race details, your lane for collecting your race kit and your unique code

This code will be scanned at the initial Registration/Check-in Tent. This code allows collection of your race kit.

Registration Check-in – Pre -Race

Competitors will now be given an opportunity to collect their registration envelope early.

On January 13th 2022, registration envelopes will be available from the entry of the PSLSC Clubhouse between 4.30pm and 6.00pm ONLY. This **MUST** be brought to the event on 15th January. There are no replacements, so if lost or forgotten, competitors **will not** be able to swim on the day. If you have collected your envelope early, you can either go directly to the start or you can come to the quarantine and catch the bus. You must enter the event at a designated point and all other rules are still required to be followed.



On the day:

- **Jarman Oval – A CAR PARK FEE OF \$5** is payable which we donate to worthy emergency services organisations.
- Registration tent will be positioned near the carpark to avoid unnecessary movement around the venue.
- There will be a Bag tent and change tents available
- Competitors will have been provided with a QR code and an individual number. This number is the swimmer's identifier (ID) and is the same for transponder and bag tag.
- There will be 8 lanes available for check-in. The swimmers registration information will state the row (lane) that you are to use to check
 - **NOTE**- it is not possible for the swimmer to collect from any other lane
- Competitors will need to line up at the tent in their designated lane. Volunteers will be available to assist re direction.
- There will be demarcation for social distancing at 1.5m and hand sanitisers at the end of the tent for Competitor use.
- There will be COVID19 Operational Partitioners (COPS) at each line ensuring safe practice standards are adhered to and to assist competitors.
- Competitors will scan their individual code when they approach the tent.
- Volunteers will retrieve the swimmer's envelope and place it in a tray at the end of the row allocated for that particular swim.
- The competitor will progress down the line and collect their envelope that will have their name, race, cap colour, bag tag (with same number as transponder) and transponder number on and in it.

THERE WILL BE NO ON DAY REGISTRATIONS FOR THE 2022 EVENT.

Ferry Transport

PSLSC have the use of a small mini-bus which is being kindly supplied by The Sorrento Hotel, which will be used to pick up registered swimmers from Sorrento Ferry Terminal. All swimmers will be instructed to use hand sanitiser on entering the bus and must wear a mask while in on the bus.



Transponders

- Transponders must be worn on the outside of the wetsuit.
- You will receive a transponder for each event you have entered.
- The competitor must keep their transponder on until AFTER they have made their collection at the Merchandise Bag Tent.
- To collect any bags (personal bag being stored in tent or Swim Classic merchandise bag), the swimmer must have their transponder with them. The transponder number correlates with the bag tag, race registration and swimmer ID)
- Transponders are now disposable and do not need to be returned after the event.
-

Changes to Registration

- The following is not permitted:
 - On day registration
 - Changing details including:
 - replacement of swimmer
 - swapping if a swimmer is unable to compete in a race
 - Collecting for another competitor
 - Swapping T-shirt size

Start Line Traffic

Transport to Starting Line

- Waves will be called approx. 75 mins prior to the start
- Buses will leave approx. 60 mins prior to the wave start time
- Allow plenty of time to travel to the start line
- Buses are available for competitors.
- Priority is given to swimmers who have a disability.
- Passengers **MUST** use hand sanitiser before entering the vehicle.
- Any person travelling in the buses **MUST** wear a disposable face mask. There will be disposable masks supplied if competitor does not have their own.
- Face masks must be disposed of responsibly and safely in the bins provided at the Start line. These bins will be placed after the swimmer crosses the start mat.



Marshalling areas at the Starting Line

- Within the marshalling area people **MUST** wear a disposable face mask.
- Face masks must be disposed of responsibly and safely in the bins provided at the Start line. These bins will be placed after the swimmer crosses the start mat.

Personal Bag storage

- Competitors must place the tag they are provided with in the registration kit, on their personal bag, if they intend to have it stored in the Bag Storage Tent.
- Competitor's transponder and bag tag number are the same and their transponder is required to be shown at time of bag collection. This maximizes our ability to securely store swimmers' belongings (PSLSC takes no responsibility for items left in tent).
- Personal bags must be tagged with supplied bag tag and are either
 - Placed in the Bag storage tent that is next to the change tent in the check-in area or
 - placed in the trailer at the Cutting. These bags will be transported to the Bag storage tent where they will be stored until you collect them.





Competitor Swim Classic Merchandise Collection

- At the end of the race, the Competitors will be directed to a tent where they will be able to pick up their Swim Classic t-shirt, cap and any other merchandising material.
- There will be three lanes for collection of merchandise. This is not lane specific unless otherwise signed. Volunteers will be available to assist re-direction.
- There will be demarcation for social distancing at 1.5m and hand sanitiser will be available.
- There will be COVID19 Operational Partitioners (COPS) at each line ensuring safe practice standards are adhered to and to assist competitors.

The Portsea SLSC volunteers have worked extremely hard behind the scenes, with all relevant authorities, to ensure this swim would take place and to provide you all with something to look forward to. It has been another extremely difficult year for us all.

I believe I speak not only for the swim classic committee, but for all competitors, when I thank our team of volunteers for their efforts to make this event possible under extremely difficult circumstances for a second year in a row.

It is now up to you to help us make this a safe, enjoyable and memorable event.

The PSLSC Swim Classic Committee once again thank you for your co-operation.



GOLD SPONSORS

blazer crestone.

GRAINSHAKER

SILVER SPONSORS

RT Edgar
MORNINGTON PENINSULA

P4O
PEOPLE4OCEAN

BRONZE SPONSORS

B | BMG
berwickmotorgroup.com.au

EVENT PARTNERS



FUNKITA®

 **ENGINE**



Therabody

DRYEARS®

ORCA

FUNKY TRUNKS®

SPLITROCK
NATURAL SPRING WATER

TIRO

PORTSEA SWIM CLASSIC WALKING OPTION





PORTSEA SWIM CLASSIC SITE PLAN 2022

Coming

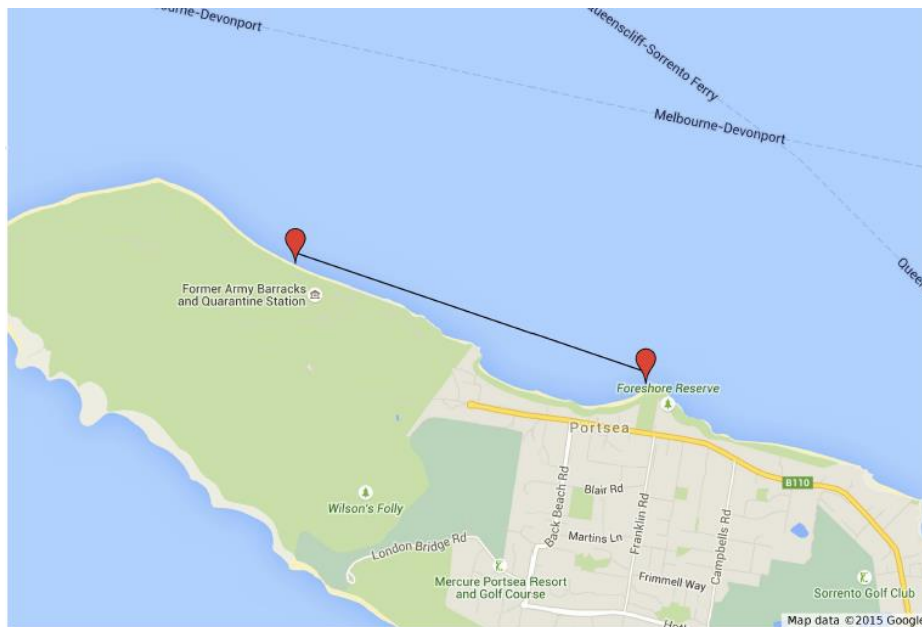
Updated

FRIDAY EVENING

PSC – 1500m



PSC – 2500m (GOLD)

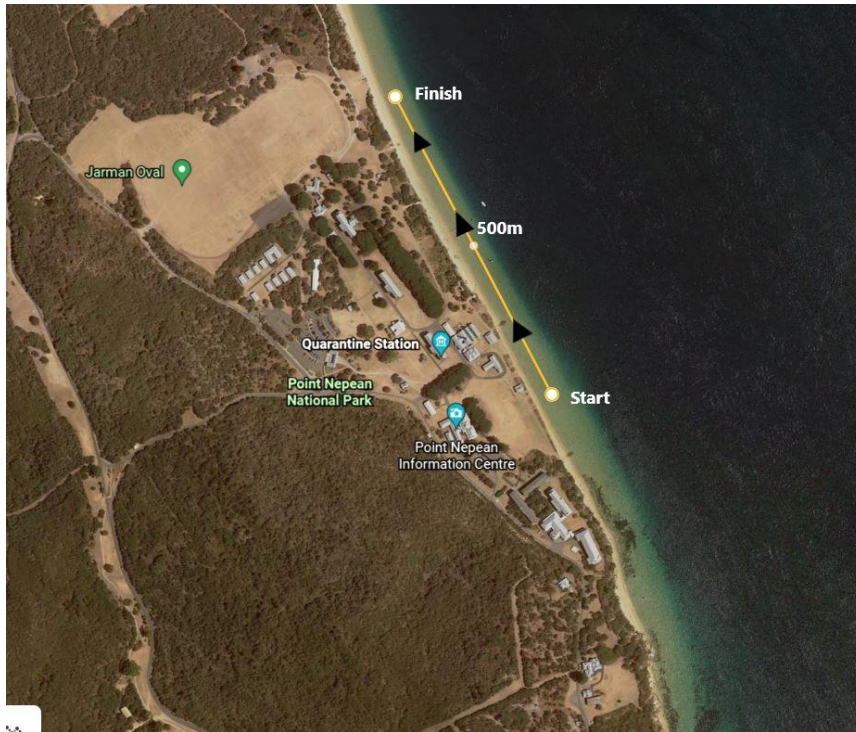


Untitled layer

- Start
- Finish
- 2.5km course

There will be 4 large buoys and 5 small buoys to mark the course from the start at Police Point to the finish at Jarman Oval (main course-Swim Classic race). Three additional buoys will be used for the Swim Classic Gold race from the east of the Portsea Hotel/pier to the main course.

Swim Classic Tribe and Junior Course Map:



- Start: The start will be from the point approx. 500m East from the access ramp to the beach at Jarman Oval
There will be 5 small buoys to mark the nominated course
- Finish: Same finish as will be used for the Swim Classic and Swim Classic Gold just to the East of the access ramp from Jarman Oval to the beach.
- Distance: 500 meters