



## PSLSC Bay to Surf 2022 Race Information

Everyone attending the Portsea Bay to Surf is required to comply with the COVID19 Safe requirements we implement on the day. We request everyone attending to supply their own disposable face mask please. We will have a supply as back up only.

- PSLSC reserves the right to withdraw any competitor from the race if they do not comply with the events COVID19 Safe instructions. If this occurs, no refund will be made.
- **Do not to attend if you have COVID-19, are a close contact, are waiting on a COVID-19 test result or are experiencing COVID-19 like symptoms**
- **People not competing on day are discouraged from attending the event this year.** We apologise for this inconvenience, and we look forward to welcoming the wider community to future events within a COVID19 free environment.

### Summary of Main Points for Competitors

#### Competitors must:

- Bring the QR Code (phone or print) that will be supplied to you via email–
- Bring a disposable mask
- Check-in at allocated time
- Comply with COVID19 Plan
  - maintain social distancing
  - use sanitiser
  - wear a mask
- Masks must be worn on transport
- There will not be anywhere to store personal bags
- Collection of merchandise bags will occur directly after the race
- Car parking will be available on Jarman Oval, Quarantine Station
  - CAR PARK FEE \$5 (cash only)
- Buses will be running between Quarantine Station and Portsea SLSC to ferry competitors/spectators to/from their vehicle
- Do not attend if you have COVID-19, are a close contact, are waiting on a COVID-19 test result or are experiencing COVID-19 like symptoms
- **RESPECT ALL OF THE VOLUNTEERS ON THE DAY**



## EVENT TIMES:

EVENT	RACE TIME	Registration Opens	Registration Closes
4.5km walk	6:15pm	4:30pm	5:45pm
4.5km run	7:15pm	5:30pm	6:45pm
9km run	7:15pm	5:30pm	6:45pm

## Registration (Pre- Race day)

Competitors details are captured via the on-line registration process. The following details are captured as part of the process:

- DOB,
- Email
- Address
- Phone contact
- T-shirt size
- Emergency Contact

Payment is accepted on-line only.

All competitors will be sent an individual code that **they must** bring with them, either on their phone or printed out. This will be scanned at the initial Registration/Check-in Tent. This ensures movement details are recorded with a date and time stamp.

All competitors must scan the QR to check in to the Service Victoria App.

The Portsea Bay to Surf requires entrants 16 years and above to have had two doses of the COVID-19 vaccine. All competitors aged 16 years and over must be able to show evidence of this at the registration tent.

## Ferry Transport

PSLSC have buses which will be used to transport competitors/spectators to/from Quarantine Station and Portsea SLSC. All spectators and competitors will be instructed to use hand sanitiser on entering the bus and **must wear a mask while on the bus**. There will be disposable masks supplied if competitor does not have their own.



The first bus will depart Jarman Oval, Quarantine Station at 6:00pm and the last bus will depart Portsea SLSC at 9:30pm.

## Car Park

Car parking will be available on Jarman Oval, Quarantine Station. **CAR PARK FEE OF \$5 (CASH ONLY)** is required which we donate to worthy emergency services organisations. Competitors will be directed to the Registration/Check-in Tent on arrival.

## Race bib collection

All competitors will be sent an individual code that **they must** bring with them, either on their phone or printed out. Competitors will scan their individual code when they approach the registration tent. Competitors will then receive their race bib.

On day registration will not be permitted in 2022.

## Start Line

### Marshalling area at the Starting Line

- Within the marshalling area people **MUST** socially distance.
- If you choose to wear a face mask in the marshalling area it must be disposed of responsibly and safely in the bins provided.

## Age Group Awards

- There will be the six **under 18** placegetters being first, second and third female and male across the line in both the 4.5km and 9km run.
- There will be the six **over 18** placegetters being first, second and third female and male across the line in both the 4.5km and 9km run.
- Where there is a close decision for places the placegetter will be determined by the line officials and is based on the competitor whose torso crosses the finish line first. It will not only be reliant on the time recorded.
- Protests must be made in writing and given to the Race Director within fifteen minutes of the announcement of the provisional results. All decisions of the Race Director are final.

## Competitor Merchandise Collection

- At the end of the race, the Competitors will be directed to a tent where they will be able to pick up their Bay to Surf t-shirt, water and goodie-bag.



## **Post-race entertainment**

There will be a food truck available to all competitors and spectators at the finish line. Portsea SLSC will also be operating a dinner service and the bar will be in operation. It is expected that only members will be permitted into the Portsea Surf Lifesaving Club to reduce the risk of overcrowding; however, Portsea SLSC reserve the right to change this at any time. Therefore, we encourage non-members to bring a picnic blanket or towel if you would like to spread out along Portsea's picturesque Back Beach and enjoy dinner from our Takn2Market food truck.



**The Portsea SLSC volunteers have worked extremely hard behind the scenes, with all relevant authorities, to ensure this run would take place and to provide you all with something to look forward to.**

**I believe I speak not only for the bay to surf committee, but for all competitors, when I thank our team of volunteers for their efforts to make this event possible.**

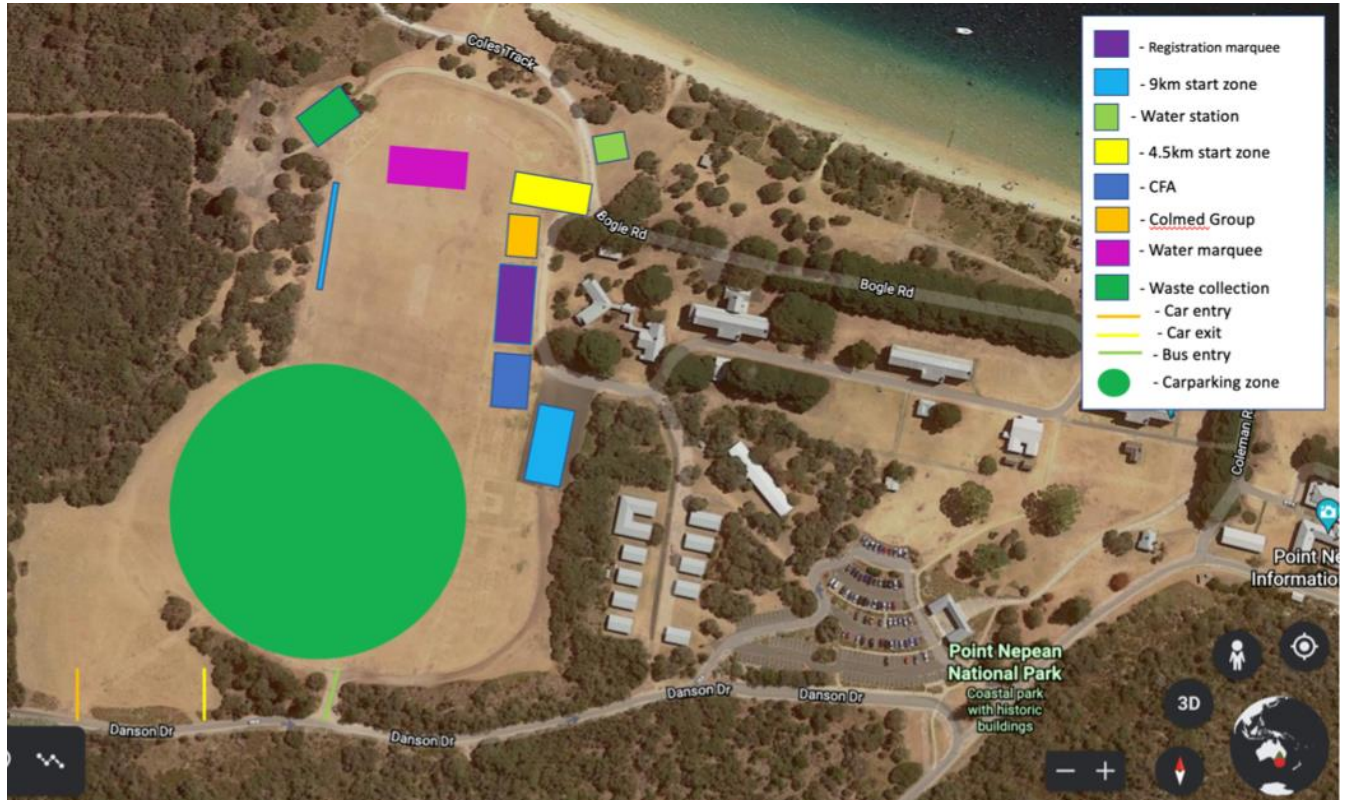
**It is now up to you to help us make this a safe, enjoyable and memorable event.**

**The PSLSC Bay to Surf Committee thank you for your co-operation.**



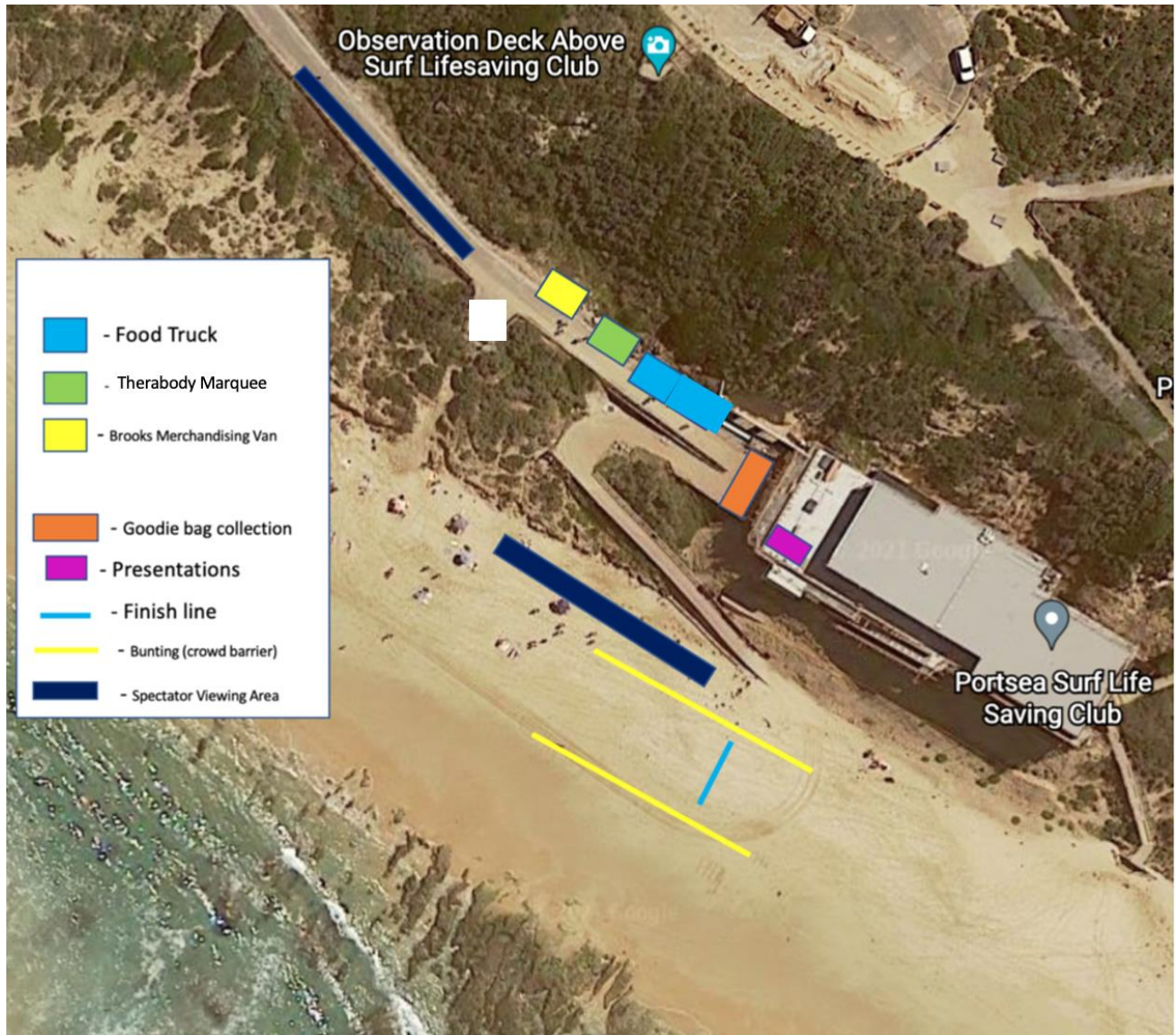
## PORTSEA BAY TO SURF 2022 - SITE PLAN

BAY TO SURF SITE PLAN, QUARANTINE STATION, PT NEPEAN, PORTSEA





BAY TO SURF SITE PLAN, PORTSEA SLSC, PORTSEA





## PORTSEA BAY TO SURF 2022 - COURSE MAPS



### The Portsea Bay to Surf 4.5km adventure walk

Competitors will start at Jarman oval and walk along the track abutting Ochiltree Road then the track abutting Defence Road. Competitors will then move onto Wilson's Folly Track and then finally progress along the picturesque Portsea Back Beach from London Bridge to Portsea SLSC.



### **The Portsea Bay to Surf 4.5km adventure run**

Competitors will start at Jarman oval and run along the track abutting Ochiltree Road then the track abutting Defence Road. Competitors will then move onto Wilson's Folly Track and then finally bring it home along Portsea Back Beach from London Bridge to Portsea SLSC.

### **The Portsea Bay to Surf 9km adventure run**

Competitors will start at Jarman oval and head along Defence Rd towards Fort Nepean before joining Coles Track and heading back to Quarantine Station. Next, along the track abutting Ochiltree Road then the track abutting Defence Road. Competitors will then move onto Wilson's Folly Track and then finally bring it home along Portsea Back Beach from London Bridge to Portsea SLSC.

There will be one water station on the 9km course at approx. halfway.