

EVENT  
*here*  
THIS  
YEAR



**PORTSEA  
SURF LIFE  
SAVING CLUB**

Uniquely located on the cliff face of Portsea Back Beach, the Portsea Surf Life Saving Club is a newly refurbished state of the art, architecturally designed surf lifesaving club and meeting space.

**OPEN SPACE  
OPEN MINDS**

---



# THE DESTINATION

Whether you're planning a Leadership ThinkTank, a Statewide get-together, a Team Building exercise or a Drive Program destination - make Portsea Surf Club your destination.

Only 90 minutes drive from Melbourne CBD, the club's open space can be configured to suit any meeting format; intimate enough for 20-50 and open enough for over 100. And with NBN lines capable of providing 100-1000mbps, you can receive or send broadcast quality content to or from anywhere in the world.

Let us tailor a 'per head' meeting package to suit your needs, whether for 1 or more days:

- Meeting package options include...
  - Whole-of-space venue hire
  - Morning and Afternoon tea/coffee/snack
  - Lunch menu (basic to full service options)
  - Free access to NBN WiFi & LAN lines.
  - Free AV facilities (screen, projector, mic)
  - Free use of breakout areas.
  - Free production office.
  - Free furnishings (configure to suit your needs).
  - Free parking.
- Local sourced 'add-on' options include...
  - Gourmet food, beer and wine packs
  - Outdoor team activities.
  - Accommodation packages.
  - Weekend extension packages including golf, fishing, dolphins tours, hot springs and various water sports.

Available Monday to Thursday Feb. to Nov.  
*Subject to Lifesaving commitments Dec to Easter.*



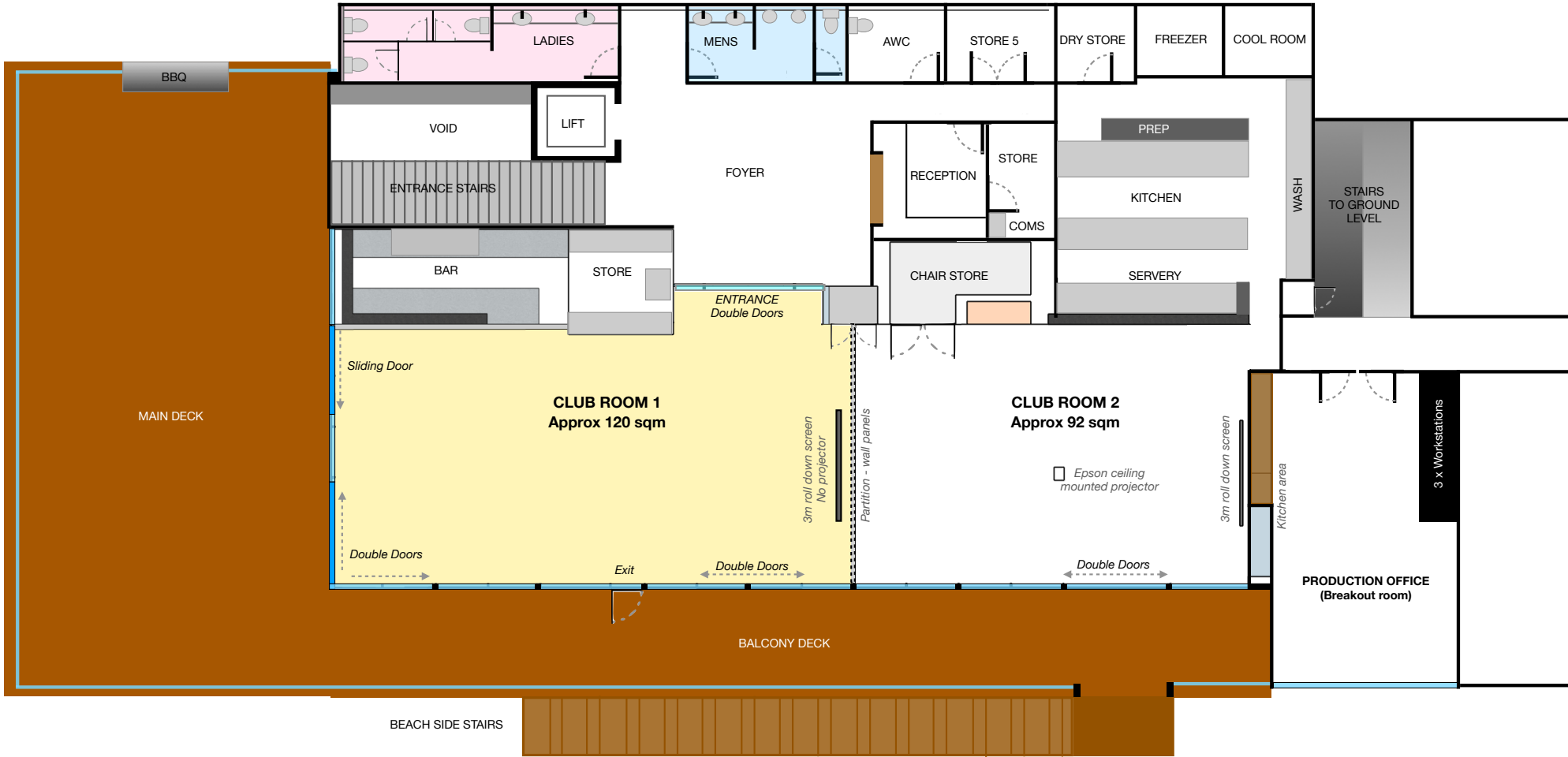


# OPEN SPACE

The club offers a flexible space, able to be divided into separate meeting and social areas. Meet in one space, then dine and network in the other or leave the entire space open and have a casual BBQ lunch on the deck. There are also additional spaces available for breakouts or production offices.

*Start thinking outside the box.*

NBN speed WiFi and LAN lines are available, so your presentation can incorporate live feeds to or from other sites. Beam in a special guest speaker from anywhere in the world or connect teams at venue around the country. *Broadcast cameras, lighting, audio and network bridging can be arranged.*

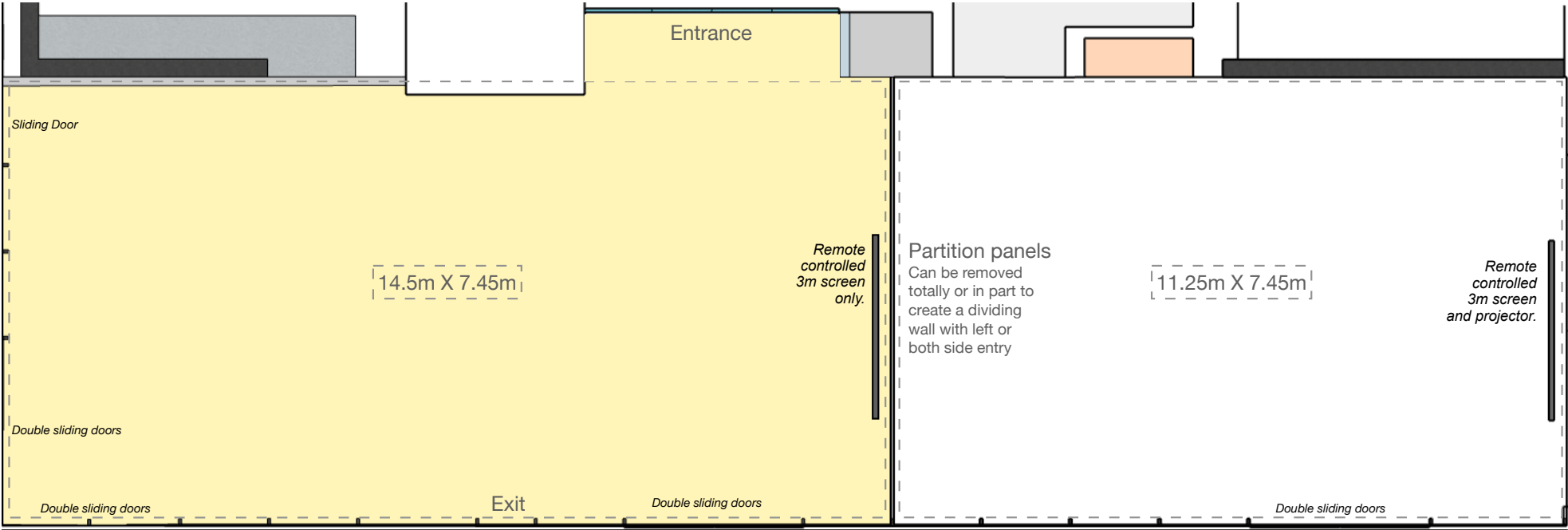


# YOUR SPACE

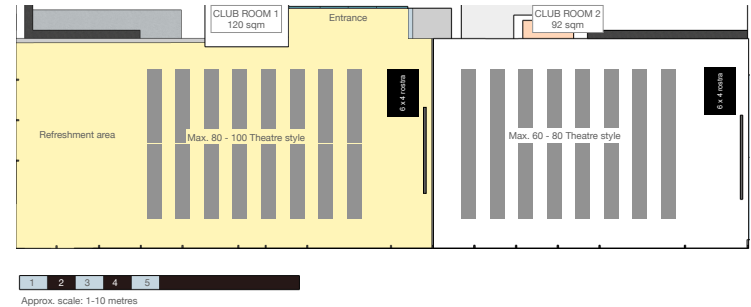
[DOWNLOAD PLAN PACK](#)

The club includes use of all existing furnishings, offering you a variety of layout options and space configurations to suit your needs.

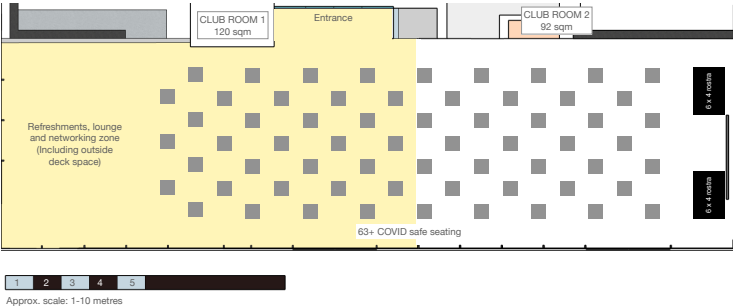
We can also assist by providing bespoke layouts, additional furnishings, decor and staging (AV, lighting, brand backdrops, etc).



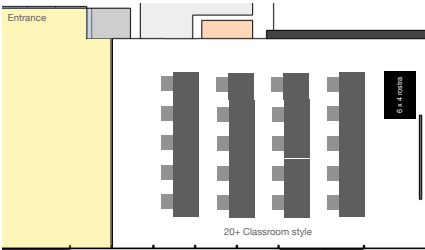
Seating Plan: Rm1 or 2 Theatre seating



Seating Plan: Rm1&2 COVID safe seating spaces



Seating Plan: Rm2 Classroom



# FRESH FOOD, BEVERAGE & AIR

The Portsea region is spoilt with local fine dining experiences and wineries and the club's fully equipped kitchen ensures all tastes can be catered for. Our locally sourced fresh produce ensures a meeting to remember; from a fine dining experience,

to locally crafted pizzas and beers, a picnic hamper or a gourmet takeaway pack. All supported by locally produced wines, craft beers or gins. We do not have a 'set menu', but tailor catering to suit the season, your needs and budget.





# CONTACT

Open your mind by booking a tour of our open space. Connect at...

[businesssevents@portseasurf.com.au](mailto:businesssevents@portseasurf.com.au)

[www.portseasurf.com.au/businesssevents](http://www.portseasurf.com.au/businesssevents)

