

EVENT *here* THIS YEAR



Uniquely located on the cliff face of Portsea Back Beach, the Portsea Surf Life Saving Club is a newly refurbished state of the art, architecturally designed surf lifesaving club and event space.

Portsea Surf Lifesaving Club

**OPEN SPACE
OPEN MINDS**

A DESTINATION

Whether you're planning a Leadership ThinkTank, a Statewide get-together, a Team Building exercise or a Drive Program - make Portsea Surf Club your destination.

Portsea Surf Lifesaving Club is only 90 minutes drive from Melbourne CBD and offers an open space that can be configured to suit the needs of up to 100 delegates. We can offer one or two day tailored meeting packages that include :

- Whole-of-space venue hire at \$5,000 for one day and \$2,500 for each extra day, including...
 - *Complimentary NBN WiFi & LAN lines.*
 - *Complimentary AV facilities.*
 - *Additional Breakout spaces.*
 - *Ample free parking.*
- Locally sourced F&B packages - \$POA.
- Outdoor team activity options - \$POA.
- Local accommodation packages - \$POA.
- Local weekend packages available - Golf, fishing, dolphins tours and all watering sports.

BOOKING AVAILABILITY :

Monday to Thursday - Feb to Nov.

Availability is subject to review, pending Lifesaving commitments.



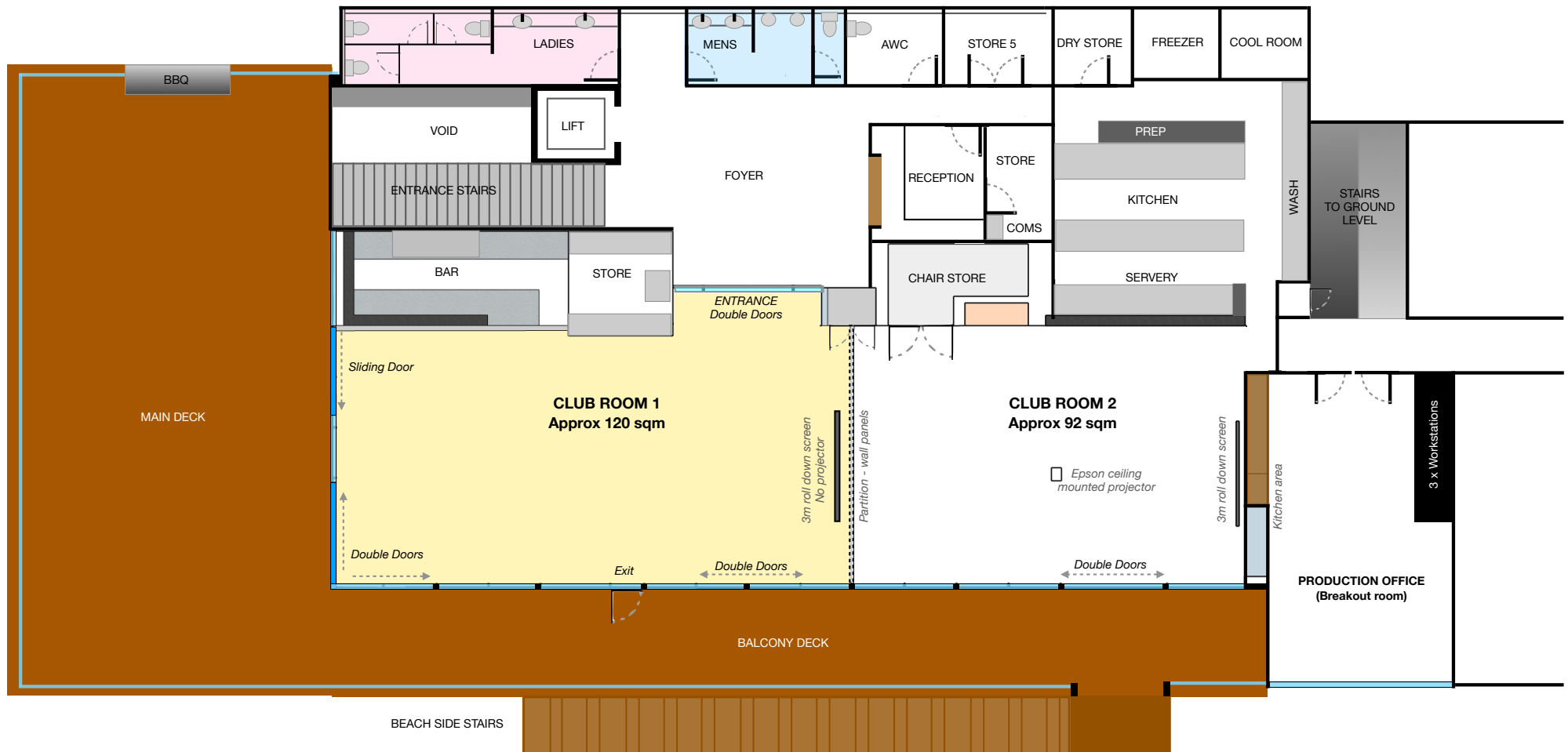
OPEN SPACE

The club offers a flexible space, able to be divided into separate meeting and social areas. Meet in one space, then dine and network in the other or leave the entire space open and have a casual BBQ lunch on the deck. There are also additional spaces available for breakouts or production offices.

Start thinking outside the box.

With NBN speed WiFi, LAN lines and AV facilities available, your presentation can incorporate live feeds to or from other sites, or guest speakers from anywhere in the world.

Broadcast cameras, lighting, audio and network bridging can be arranged. \$POA.. -

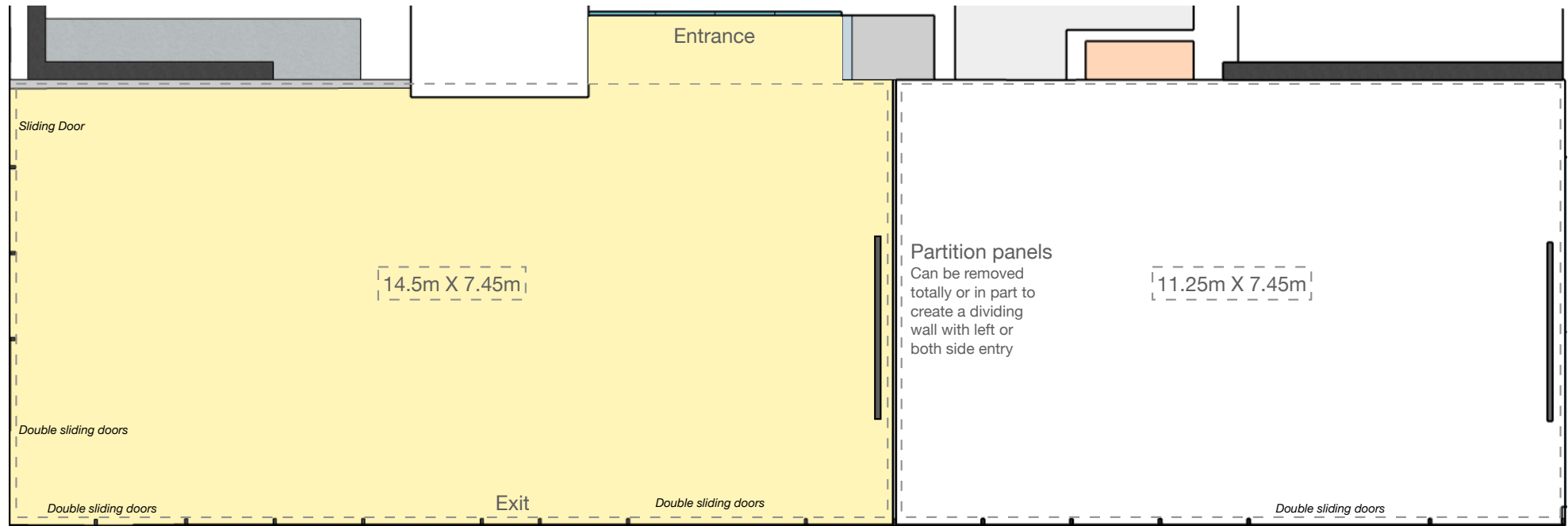


YOUR SPACE

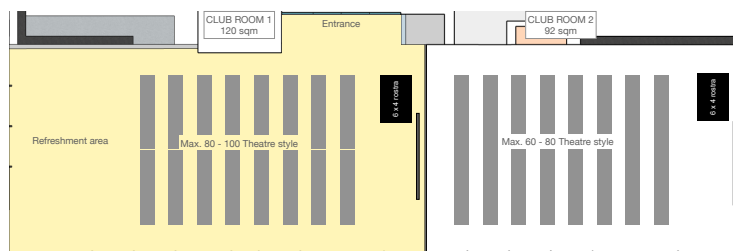
[DOWNLOAD PLAN PACK](#)

The club includes use of all existing furnishings, offering you a variety of layout options and space configurations to suit your needs.

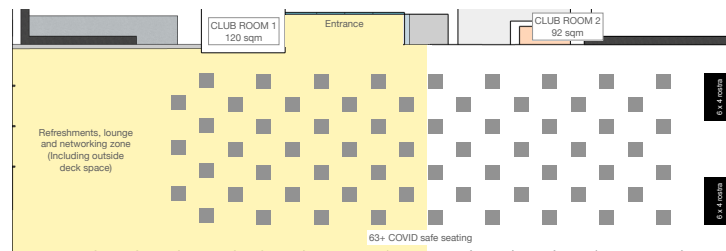
We can also assist by providing bespoke layouts, additional furnishings, decor and staging.



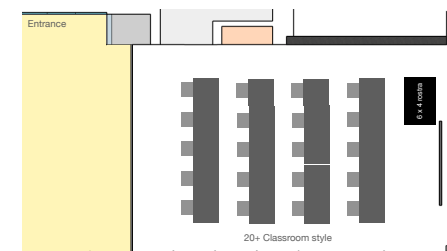
Seating Plan: Rm1 or 2 Theatre seating



Seating Plan: Rm1&2 COVID safe seating spaces



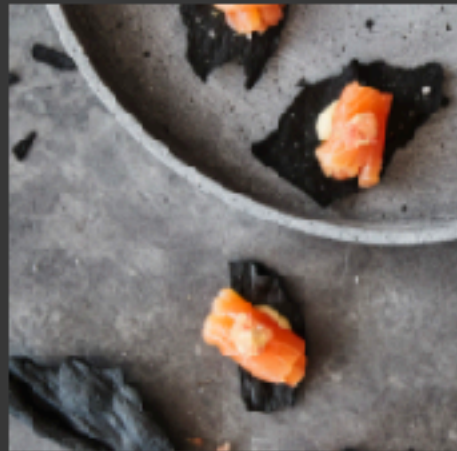
Seating Plan: Rm2 Classroom



FRESH FOOD, BEVERAGE & AIR

The Portsea region is spoilt with local fine dining experiences and wineries and the club's fully equipped kitchen ensures all tastes can be catered for. Our locally sourced fresh produce ensures a meeting to remember; from a fine dining experience, to locally crafted pizzas and

beers, a picnic hamper or a gourmet takeaway pack. All supported by locally produced wines, craft beers or gins. We do not have a 'set menu', but tailor catering to suit the season, your needs and budget.



CONTACT

Get some fresh air by booking in a tour or make a booking enquiry by contacting us at....

businessevents@portseasurf.com.au

www.portseasurf.com.au/businessevents

