



PSLSC - Pier to Perignon 2021 COVID19 Plan and Race Information

21st February 2021 – UPDATE 19-02

Competitors and volunteers are advised to regularly check the Pier to Perignon website for any updates.

All instructions relating to the race (COVID19 responsibilities & new system) are below.

The Pier to Perignon Committee appreciate that this year the swim will be quite different to past years with the adaptation to the COVID19 restrictions.

Please read and familiarise yourself with the new arrangements.

The following is the current race time information. It is VERY IMPORTANT.

This is an ever-changing situation, and we are providing this on the basis that we are moving ahead with the Pier to Perignon 2021 this Sunday the 21st February.

Like the rest of Victoria, we are always aware of possible changes and this information and the PSLSC website will be modified accordingly. Please continue to check regularly for updates.

WAVE TIMES: - UPDATE OF TIMES

The Event is now going to be run in Two (2) Waves:

Wave 1: Immediately after the 11.00 am Ferry – Registration from 9.30am

Wave 2: Immediately after the 1.00 pm Ferry – Registration from 11.30am

YOU MUST REGISTER IN YOUR ALLOTTED TIME

The above is to ensure that the event's participant numbers align with COVID19 Safe Plans and other requirements. Volunteers and ancillary services are not included in this number.

We are mindful of the current situation and have made the move to the 2-wave format as an extra precaution to minimize the amount of people at the venue at any one time.

Everyone attending the Portsea Pier to Perignon is required to comply with the COVID19 Safe requirements we implement on the day. PLEASE NOTE- these may be stricter than the stated DHHS standards at the time. (We make no apologies for this as I am sure you appreciate - THIS IS FOR YOUR SAFETY TOO!)

We request everyone attending to supply their own disposable face mask please. We will have a supply as back up only.



The use of masks in the queues when collecting your race gear, in the marshalling area at the start and on the bus will be mandatory.

For swimmers that hold a mask wearing exception, please provide evidence with your COVID19 self-assessment and have with you on the day.

- PSLSC reserves the right to withdraw any swimmer from the race if they do not comply with the events COVID19 Safe instructions. If this occurs, no refund will be made.
- **People not swimming on day are discouraged from attending the event this year.** We apologise for this inconvenience and we look forward to welcoming the wider community to future events within a COVID19 free environment.



Summary of Main Points for Competitors

- Your details will be emailed to you 2 days prior to the event which includes links to:
 - Covid-19 Checklist – **YOU MUST COMPLETE THIS**
 - Entry form which includes QR code, Race ID and other race details
 - Final Covid-19 Safe Information doc

Competitors must:

- Fill out COVID19 Self-Assessment form and lodge.
- Bring QR Code (phone or print) that will be supplied to you via email–
 - It is preferable that it is printed to minimize need to have phone with you
 - Swimmer's competitor number is the same for ID, Transponder, and Bag Tag
- Bring a disposable mask or exception letter
- Check-in at allocated time using the row allocated to your Race Transponder Number
 - This will be included on the Entry Information you are sent
- This year, you **DO NOT** receive your merchandise bag at time of registration, you will only receive an envelope with:
 - Disposable Transponder
 - Bag Tag (same number as transponder) – Used if you wish your personal bag transported from Sorrento to Portsea Camp Oval finish area
 - Swimming Cap
- Due to changes you will not have the Kay & Burton Bag to store things prior to the race.
- Comply with COVID19 Plan
 - maintain social distancing
 - use sanitiser
 - wear a mask
- Masks must be worn on transport, in line, and at marshalling area at the start line.
- Masks to be dispensed of in bins provided only when directed to do so by the race announcer- Bins will be situated in the marshalling area
- All personal bags that are being transported by the race organisers must be tagged with bag tag provided.
 - *The bag tag is a paper wrist band so please don't get confused and wear it.*
 - Bags are left at swimmers' own risk
 - Collection of bags must occur directly after the race
- Once finished please **DO NOT** congregate in the finish area, please continue to the Portsea Camp Oval
- Transponders must be kept on until after collecting bag from Merchandise Tent. (Swimmers will walk over a mat for final scan which allows collection).
- Transponder number is the same as your Bag Tag number and is your ticket for collection of your bag.



You need to ensure you fully understand the above information and read the following information to ensure you understand the changes made to this year's event.

- Wave 1 competitors - **Must** leave the finish reserve area (Portsea Camp Oval) by 1.30pm
- Wave 2 competitors - On the day of the race are not to collect their race gear at the start prior to 11.30 am
- WHEN IN DOUBT ASK
- **VERY IMPORTANT – PLEASE RESPECT ALL OF THE VOLUNTEERS ON THE DAY**

WAVE TIMES:

Wave 1: Immediately after the 11.00 am Ferry

Wave 2: Immediately after the 1.00 pm Ferry

The above is subject to change so please constantly check the PSLSC – P2P webpage

Registration (Pre- Race day)

Competitors details are captured via the on-line registration process. The following details are captured as part of the process:

- DOB,
- Email
- Address
- Phone contact
- Swim detail,
- T-shirt size
- Emergency Contact

Payment is accepted on-line only.

The on-line registration platform has the capability to send texts and emails to those registered. Two days prior to the event, all competitors will be sent the **Coronavirus Symptom Self-assessment** and any updates related to the race.

All competitors will be sent an individual code that **they must** bring with them, either on their phone or printed out. This will be scanned at the initial Registration/Check-in Tent. This ensures movement details are recorded with a date and time stamp.

****Please notify PSLSC if you will be accompanied by a carer or support person. This person's details must be recorded, and they are also required to complete and submit the Coronavirus Symptom Self-assessment.**



Symptom Self-assessment

All competitors, volunteers, ancillary services, food vendors and contractors will be required to complete the Coronavirus Symptom Self-assessment prior to attending the PSLSC Pier to Perignon 2021 and entering the venue.

Swimmers:

- Swimmers must understand that it is mandatory for them to have completed a symptom self-assessment prior to arrival at the event and entering the venue.
- Two days prior to the swim, you will be sent an on line COVID19 health questionnaire. If this is **NOT** completed and submitted, swimmers will not be able to complete registration check-in on the day of event and compete.

Volunteers:

- All instructions relating to the race (COVID19 responsibilities & new system) will be posted on the website and a link to this information emailed out to volunteers prior to the event.
- Face masks will be available for any volunteer who does not have one.
- Volunteers must use hand sanitiser regularly as instructed on the day.
- There will be manual self-assessment forms and tracking sheets available as an emergency back-up due to unforeseeable circumstances.

External Services:

- All external services are required to fill out a Coronavirus Symptom Self-assessment prior to attending the PSLSC Pier to Perignon 2021 and entering the venue.
- These will be sent out 2 days before the event.
- There will be manual self-assessment forms and tracking sheets available as an emergency back-up due to unforeseeable circumstances.

There will be COVID19 Operations Practitioners on-site to monitor COVID19 compliances and assist where practicable.

Ferry Transport

PSLSC have a bus which will be used to take registered swimmers from the finish at Portsea Camp back to the Sorrento Ferry Terminal. All swimmers will be instructed to use hand sanitiser on entering the bus and must wear a mask while in on the bus.

Car Parking

We will be running a bus between the Portsea Camp and Start for competitors to be able to transit between parking at Portsea and the start. All swimmers will be instructed to use hand sanitiser on entering the bus and must wear a mask while on the bus.



Registration Check-in

Pre-Race:

Competitors will now be given an opportunity to collect their registration envelope early.

This envelope includes:

- Disposable Race Transponder that is your designated race number
- Silicon P2P Swimming Cap
- A Bag Identification Tag that you can place on your personal bag if you wish it transported from the start to the finish line. This tag has your race number on it and therefore is matched with your Race Transponder when collecting your bag.

On Saturday February 20th, 2021, registration envelopes will be available from the entry of the PSLSC Clubhouse between 3.00pm and 5.00pm ONLY.

- You **MUST BRING** your QR code to enable collection.
- You will be required to **wear a mask** whilst collecting this envelope.
- The contents of the envelope **MUST** be brought to the event on 21st February.
- There are no replacements, so if lost or forgotten, competitors will not be able to swim on the day. If you have collected your envelope early, you must:
 1. Not enter the marshalling area before the time designated for your Wave
 - a. Wave 1 – 8.30 am
 - b. Wave 2 – 11.30 am
 2. All other rules are still required to be followed.

On the day:

- Envelope collection tents will be positioned near the carpark to avoid unnecessary movement around the venue.
- Competitors will have been provided with a QR code and an individual number. This number is the swimmer's identifier (ID) and is the same for transponder and bag tag.
- There will be 5 lanes available for check-in. Your swimmers ID collection form will show the lane that you must line up in to check-in.
 - **It is not possible for the swimmer to collect from any other lane or at any other time.**
 - **You must have a mask on at all times while collecting your envelope and whilst in the marshalling area.**
- Competitors will need to line up at the tent in their designated lane. Volunteers will be available to assist re direction.
- There will be demarcation for social distancing at 1.5m and hand sanitisers at the end of the tent for Competitor use.



- There will be COVID19 Operational Partitioners (COPS) at each line ensuring safe practice standards are adhered to and to assist competitors.
- Competitors will scan their individual code when they approach the tent.
- Volunteers will retrieve the swimmer's envelope and place it in a tray at the end of the row.
- The competitor will progress down the line and collect their envelope that will contain:
 - Disposable Race Transponder that is your designated race number
 - Silicon P2P Swimming Cap
 - A Bag Identification Tag that you can place on your personal bag if you wish it transported from the start to the finish line. This tag has your race number on it and therefore is matched with your Race Transponder when collecting your bag.

No On-Day registration or changes permitted for the 2021 event.

Transponders

- Transponders must be worn on the outside of the wetsuit.
- You will be required to collect your transponders separately in the times allocated for that wave.
- The competitor must keep their transponder on until AFTER they have made their collection at the Merchandise Bag Tent.
- To collect any bags (personal bag being stored in tent or Pier to Perignon merchandise bag), the swimmer must have their transponder with them. The transponder number correlates with the bag tag, race registration and swimmer ID)
- Transponders are now disposable and do not need to be returned after the event.

Changes to Registration

- The following is not permitted:
 - On day registration
 - Changing details including:
 - replacement of swimmer
 - swapping if a swimmer is unable to compete in a race
 - Collecting for another competitor
 - Swapping T-shirt size
- Refunds will be provided if the swimmer was absent due to being directed to stay at home due to Corona Virus.



Start Line Traffic

Transport to Starting Line from Portsea Camp

- Buses are available for competitors.
- Priority is given to swimmers who have a disability.
- Passengers MUST use hand sanitiser before entering the vehicle.
- Any person travelling in the buses MUST wear a disposable face mask. There will be disposable masks supplied if competitor does not have their own.
- Face masks must be disposed of responsibly and safely in the bins provided at the Start line. These bins will be placed in the start area and you are required to wear them until advised by the start announcer that it is ok to dispose of them.

Marshalling areas at the Starting Line

- Within the marshalling area people MUST wear a disposable face mask.
- Face masks must be disposed of responsibly and safely in the bins provided at the Start line. These bins will be placed in the start area and you are required to wear them until advised by the start marshal that it is ok to dispose of them.

Personal Bag storage

- Competitors must place the tag they are provided with in the registration kit, on their personal bag, if they intend to have it transported to the Portsea Camp.
- Competitor's transponder and bag tag number are the same and their transponder is required to be shown at time of bag collection. This maximizes our ability to securely store swimmers' belongings (PSLSC takes no responsibility for items).

Competitor Pier to Perignon Merchandise Collection and Finish Area

- Please do not mingle at the finish line
- Please proceed to the Merch tent on the Portsea Camp Oval immediately after completing your swim – Collection of T-Shirt and Cap is here
- **Masks will be available at the top of the walkway so that you have them for the Merch Tent line**
- There will be three lanes for collection of merchandise. This is not lane specific unless otherwise signed. Volunteers will be available to assist re-direction.
- Social distancing at 1.5m is required and hand sanitiser will be available.
- There will be COVID19 Operational Partitioners (COPS) at each line ensuring safe practice standards are adhered to and to assist competitors.
- It is important that you follow instruction on when to walk across the mat that will recognize your number and then print out your details from which the volunteers will be able to provide you with your T-Shirt size.

We try to ensure that correct T-Shirt sizing is provided but can't guarantee this.



- **VERY IMPORTANT**
- Wave 1 - Competitors must leave the FINISH ARENA at Portsea Camp by 12.30pm
- Wave 2 - Competitors are not permitted in registration/check-in area before 11.30pm.



The Portsea SLSC volunteers have worked extremely hard behind the scenes, with all relevant authorities, to ensure this swim would take place and to provide you all with something to look forward to.

I believe I speak not only for the Pier to Perignon committee, but for all competitors, when I thank our team of volunteers for their efforts to make this event possible.

It is now up to you to help us make this a safe, enjoyable and memorable event.

In the unfortunate situation that we are unable to conduct the Pier to Perignon on the 21st of February the PSLSC is looking at alternate dates. If this occurs we will advise all swimmers, but please keep an eye on updates on the PSLSC website.

If we are unable to facilitate a change of dates then we will, as advised in the race T&C's and race communication, send out the race merchandise to all competitors.

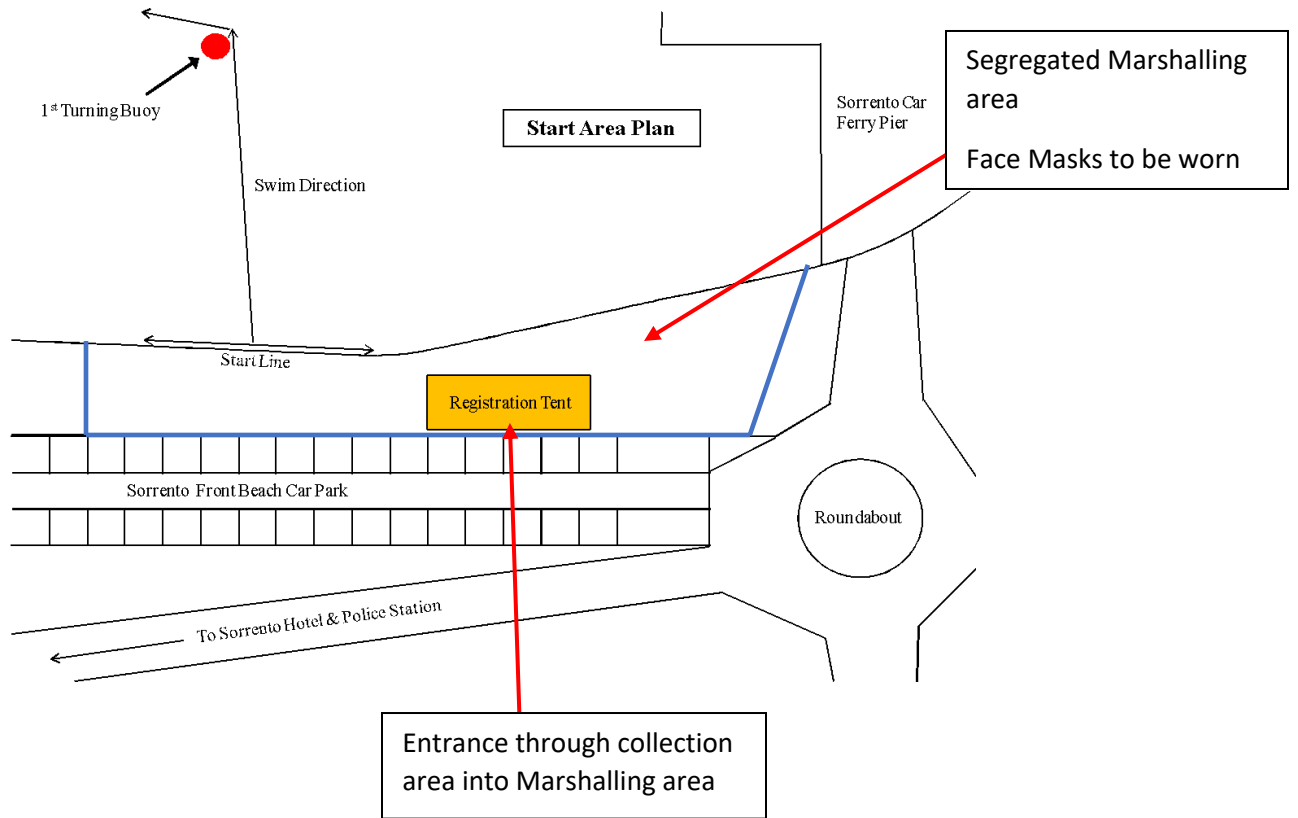
The PSLSC Pier to Perignon Committee thank you for your co-operation.

KAY&BURTON
crestone.

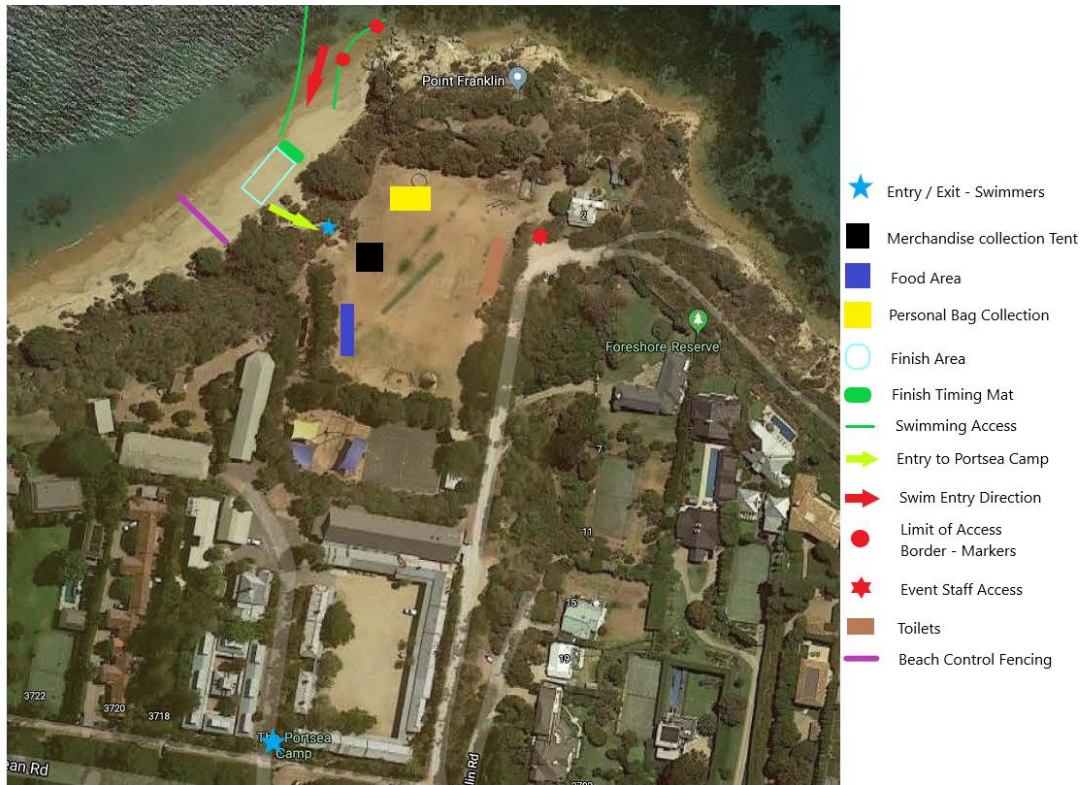
light
ON LANDSCAPE



PIER TO PERIGNON START LINE PLAN 2021



PIER TO PERIGNON FINISH LINE PLAN 2021



PIER TO PERIGNON COURSE MAP

