



PSLSC Swim Classic 2021 COVID19 Plan and Race Information

EVENT IS SOLD OUT

Competitors and volunteers are advised to regularly check the Swim Classic website for any updates.

All instructions relating to the race (COVID19 responsibilities & new system) are below.

The Swim Classic Committee appreciate that this year the swim will be quite different than past years with the adaptation to the COVID19 restrictions.

Please read and familiarise yourself with the new arrangements.

The Portsea Swim Classic 2021 is divided into two halves. The morning session will be held between 8.00am – 1.30pm and the afternoon session will be held between 2.00pm - 5.30pm. This is to ensure that the event's participant numbers align with COVID19 Safe Plans and other requirements. Volunteers and ancillary services are not included in this number.

For the Portsea Swim Classic 1500M there will be a 5-minute gap between each swim wave.

Everyone attending the Portsea Swim Classic is required to comply with the COVID19 Safe requirements we implement on the day. PLEASE NOTE- these may be stricter than the stated DHHS standards at the time (we must comply with what was agreed when the permit was approved. THIS IS FOR YOUR SAFETY TOO!

We request everyone attending to supply their own disposable face mask please. We will have a supply as back up only.

For swimmers that hold a mask wearing exception, please provide evidence with your COVID19 self-assessment and have with you on the day.

- PSLSC reserves the right to withdraw any swimmer from the race if they do not comply with the events COVID19 Safe instructions. If this occurs, no refund will be made.
- **People not swimming on day are discouraged from attending the event this year.** We apologise for this inconvenience and we look forward to welcoming the wider community to future events within a COVID19 free environment.

Summary of Main Points for Competitors

Competitors must:

- Fill out COVID19 Self-Assessment forms and return. These will be emailed to you.
- Bring QR Code (phone or print) that will be supplied to you via email–
 - It is preferable that it is printed
- Swimmer's competitor number is the same for ID, transponder and bag tag
- Bring a disposable mask or exception letter
- Check-in at allocated time using the row allocated to your Race Number
- This year you **do not** receive your merchandise bag at time of registration, you will only receive an envelope with:
 - Disposable Transponder
 - Bag Tag (same number as transponder)
 - Swimming Cap – Allocated cap colour
- Due to changes you will not have the Blazer bag to store things prior to the race.
- Comply with COVID19 Plan
 - maintain social distancing
 - use sanitiser
 - wear a mask
- Masks must be worn on transport, in line, and at marshalling area at the start line.
- Masks to be dispensed of in bins provided (situated after you cross the start mat)
- All personal bags being stored by race organisers must be tagged with bag tag provided. (Bags left at swimmers' own risk).
- Collection of bags must occur directly after the race (exception for swimmers who are registered in both the Gold and 1500 metre swim).
- Transponders must be kept on until after collecting bag from Merchandise Tent. (Swimmers will walk over a mat for final scan which allows collection).
- Transponder number is the same as your Bag Tag number and is your ticket for collection of your bag
- CAR PARK FEE \$5
- BUS FEE FROM SORRENTO FERRY \$5 Each Way

You need to ensure you fully understand the above information and read the following information and ensure you understand the changes made to this year's event.

- Morning competitors must leave the area by 2.00pm
- Morning competitors have access to all areas prior to 2.00pm
- Afternoon competitors permitted in designated areas from 2.15pm
- Afternoon competitors only have access to the Check-in and bus transfer areas prior to their swim and all areas post swim
- WHEN IN DOUBT ASK
- **VERY IMPORTANT – PLEASE RESPECT ALL OF THE VOLUNTEERS ON THE DAY**

WAVE TIMES:

PSC-PORTSEA SWIM CLASSIC WAVE TIMES

MORNING SESSION				
WAVE	RACE TIME	CATEGORY	CAP COLOUR	Registration From
1	8.30	Junior	Fluro Green	7:30
2	8.40	Junior Girls	Fluro Green	7:30
1	8.50	Tribe	Fluro Pink	7:30
GAP TO ALLOW COURSE TO CLEAR				
1	10.30	GOLD	Gold	8:30
GAP TO ALLOW COURSE TO CLEAR				
1	11.40	70+	Fluro Green	9:40
2	11.45	60-69 MALE	Black	9:40
3	11.50	60-69 FEMALE	Fluro Pink	9:40
4	11.55	50-59 MALE	White	9:40
5	12.00	50-59 FEMALE	Royal	9:40
6	12.05	MIXED 1	Red	9:40
AFTERNOON SESSION				
WAVE	TIME	CATEGORY	Colour	Registration From
7	3.30	MIXED 2	Silver	14:05
8	3.35	40-49 MALE	Fluro Yellow	14:05
9	3.40	40-49 FEMALE	Pink	14:05
10	3.45	30-39 MALE	Fluro Green	14:05
11	3.50	30-39 FEMALE	Sky Blue	14:05
12	3.55	JUNIOR MALE	Navy	14:35
13	4.10	JUNIOR FEMALE	Fluro Pink	14:35
14	4.15	OPEN MALE	Orange	14:35
15	4.20	OPEN FEMALE	Purple	14:35



Registration (Pre- Race day)

Competitors details are captured via the on-line registration process. The following details are captured as part of the process:

- DOB,
- Email
- Address
- Phone contact
- Swim detail,
- T-shirt size
- Emergency Contact

Payment is accepted on-line only.

The on-line registration platform has the capability to send texts and emails to those registered. Two days prior to the event, all competitors will be sent the **Coronavirus Symptom Self-assessment** and any updates related to the race.

All competitors will be sent an individual code that **they must** bring with them, either on their phone or printed out. This will be scanned at the initial Registration/Check-in Tent. This ensures movement details are recorded with a date and time stamp.

**Please notify PSLSC if you will be accompanied by a carer or support person. This person's details must be recorded and they are also required to complete and submit the Coronavirus Symptom Self-assessment.

Symptom Self-assessment

All competitors, VIP guests, volunteers, ancillary services, food vendors and contractors will be required to complete the Coronavirus Symptom Self-assessment prior to attending the PSLSC Swim Classic 2021 and entering the venue.

Swimmers:

- Swimmers must understand that it is mandatory for them to have completed a symptom self-assessment prior to arrival at the event and entering the venue.
- Two days prior to the swim, they will be sent an on line COVID19 health questionnaire. If this is **NOT** completed and submitted, swimmers will not be able to complete registration check-in on the day of event and compete.

Volunteers:

- All instructions relating to the race (COVID19 responsibilities & new system) will be posted on the website and emailed out to volunteers prior to the event.
- Face masks will be available for any volunteer who does not have one.

E&OE

- Volunteers must use hand sanitiser regularly as instructed on the day.
- There will be manual self-assessment forms and tracking sheets available as an emergency back-up due to unforeseeable circumstances.

External Services:

- All external services are required to fill out a Coronavirus Symptom Self-assessment prior to attending the PSLSC Swim Classic 2021 and entering the venue.
- These will be sent out 2 days before the event.
- There will be manual self-assessment forms and tracking sheets available as an emergency back-up due to unforeseeable circumstances.

There will be COVID19 Operations Practitioners on-site to monitor COVID19 compliances and assist where practicable.

Ferry Transport

PSLSC have small buses which will be used to pick up registered swimmers from Sorrento Ferry Terminal. All swimmers will be instructed to use hand sanitiser on entering the bus and must wear a mask while in on the bus.

Car Park

Car park will be divided into 2 sections. One half for the morning and the other half for the afternoon. This will assist with more efficient and COVID19 safe practices. Competitors will be directed to the Registration/Check-in Tent on arrival and any unregistered non-competitors to a stand to complete a COVID19 Tracing form.

Registration Check-in (On Day)

Competitors will now be given an opportunity to collect their registration envelope early.

On January 22nd 2021, registration envelopes will be available from the entry of the PSLSC Clubhouse between 4.00pm and 5.00pm ONLY. This MUST be brought to the event on 23rd January. There are no replacements, so if lost or forgotten, competitors will not be able to swim on the day. If you have collected your envelope early, you can either go directly to the start or you can come to the quarantine and catch the bus. You must enter the event at a designated point and all other rules are still required to be followed.

On the day:

- **CAR PARK FEE OF \$5** is payable which we donate to worthy emergency services organisations. This year it is the CFA and St. Johns ambulance
- Registration tent will be positioned near the carpark to avoid unnecessary movement around the venue.

- Competitors will have been provided with a QR code and an individual number. This number is the swimmer's identifier (ID) and is the same for transponder and bag tag.
- There will be 8 lanes available for check-in. The swimmers ID dictates what time and lane they must line up in to check-in. **NOTE**- it is not possible for the swimmer to collect from any other lane or at any other time.
- Competitors will need to line up at the tent in their designated lane. Volunteers will be available to assist re direction.
- There will be demarcation for social distancing at 1.5m and hand sanitisers at the end of the tent for Competitor use.
- There will be COVID19 Operational Partitioners (COPS) at each line ensuring safe practice standards are adhered to and to assist competitors.
- Competitors will scan their individual code when they approach the tent.
- Volunteers will retrieve the swimmer's envelope and place it in a tray at the end of the row allocated for that particular swim.
- The competitor will progress down the line and collect their envelope that will have their name, race, cap colour, bag tag (with same number as transponder) and transponder number on and in it.

No On-Day registration permitted for the 2021 event.

Transponders

- Transponders must be worn on the outside of the wetsuit.
- You will receive a transponder for each event you have entered.
- If you are swimming in a morning and afternoon session you will be required to collect your transponders separately in the times allocated for that session.
- The competitor must keep their transponder on until AFTER they have made their collection at the Merchandise Bag Tent.
- To collect any bags (personal bag being stored in tent or Swim Classic merchandise bag), the swimmer must have their transponder with them. The transponder number correlates with the bag tag, race registration and swimmer ID)
- Transponders are now disposable and do not need to be returned after the event.

Changes to Registration

- The following is not permitted:
 - On day registration
 - Changing details including:
 - replacement of swimmer
 - swapping if a swimmer is unable to compete in a race
 - Collecting for another competitor
 - Swapping T-shirt size

- Refunds will be provided if the swimmer was absent due to Corona Virus.

Start Line Traffic

Transport to Starting Line

- Buses are available for competitors.
- Priority is given to swimmers who have a disability.
- Passengers MUST use hand sanitiser before entering the vehicle.
- Any person travelling in the buses MUST wear a disposable face mask. There will be disposable masks supplied if competitor does not have their own.
- Face masks must be disposed of responsibly and safely in the bins provided at the Start line. These bins will be placed after the swimmer crosses the start mat.

Marshalling areas at the Starting Line

- Within the marshalling area people MUST wear a disposable face mask.
- Face masks must be disposed of responsibly and safely in the bins provided at the Start line. These bins will be placed after the swimmer crosses the start mat.

Personal Bag storage

- Competitors must place the tag they are provided with in the registration kit, on their personal bag, if they intend to have it stored in the Bag Storage Tent.
- Competitor's transponder and bag tag number are the same and their transponder is required to be shown at time of bag collection. This maximizes our ability to securely store swimmers' belongings (PSLSC takes no responsibility for items left in tent).
- Personal bags must be tagged with supplied bag tag and are either
 - Placed in the Bag storage tent that is next to the change tent in the check-in area or
 - placed in the trailer at the Cutting. These bags will be transported to the Bag storage tent where they will be stored until you collect them.

Competitor Swim Classic Merchandise Collection

- At the end of the race, the Competitors will be directed to a tent where they will be able to pick up their Swim Classic t-shirt, cap and any other merchandising material.
- There will be three lanes for collection of merchandise. This is not lane specific unless otherwise signed. Volunteers will be available to assist re-direction.
- There will be demarcation for social distancing at 1.5m and hand sanitiser will be available.
- There will be COVID19 Operational Partitioners (COPS) at each line ensuring safe practice standards are adhered to and to assist competitors.

- **VERY IMPORTANT**
- Morning competitors must leave the area by 2.00pm
- Afternoon competitors permitted in registration – check-in area from 2.15pm.



The Portsea SLSC volunteers have worked extremely hard behind the scenes, with all relevant authorities, to ensure this swim would take place and to provide you all with something to look forward to.

I believe I speak not only for the swim classic committee, but for all competitors, when I thank our team of volunteers for their efforts to make this event possible.

It is now up to you to help us make this a safe, enjoyable and memorable event.

The PSLSC Swim Classic Committee thank you for your co-operation.

BLAZER

crestone. **GRAINSHAKER** 



Australia Day

Reflect. Respect. Celebrate.

MERCHANDISE OPTIONS

[ORCA Wetsuits - Pre-order Online](#)

ORCA will be back at the Portsea Swim Classic with rental wetsuits. To ensure that you don't miss out please book your rental on our new online wetsuit rental portal.

<https://www.orca-australia.com.au/Wetsuits-Hire-Rental-Orca.html>

We will be at the swim for wetsuit rental collection, however due to COVID restrictions on the day, it will make your morning far easier if you are able to collect from our warehouse in Moorabbin prior to the event.

If you are unsure of your size please refer to this size guide:

<https://www.orca-australia.com.au/Wetsuit-Size.html>

Our offer to deduct the \$50 rental fee off the purchase of a new wetsuit will be available, for the period of 2 weeks post the swim.



[Funky Trunks Click and Collect](#)

Please visit Funky Trunk's dedicated PSC website to order your bathers for collection [here](https://funkita.funkytrunks.com/) (<https://funkita.funkytrunks.com/>)



PORTSEA SWIM CLASSIC

FUNKY TRUNKS® FUNKITA

CLICK & COLLECT

SHOP NEW FUNKY COLLECTION NOW

EXCLUSIVE COMPETITOR ACCESS

EVENT SALES PRICES. NEW COLLECTION ACCESS.

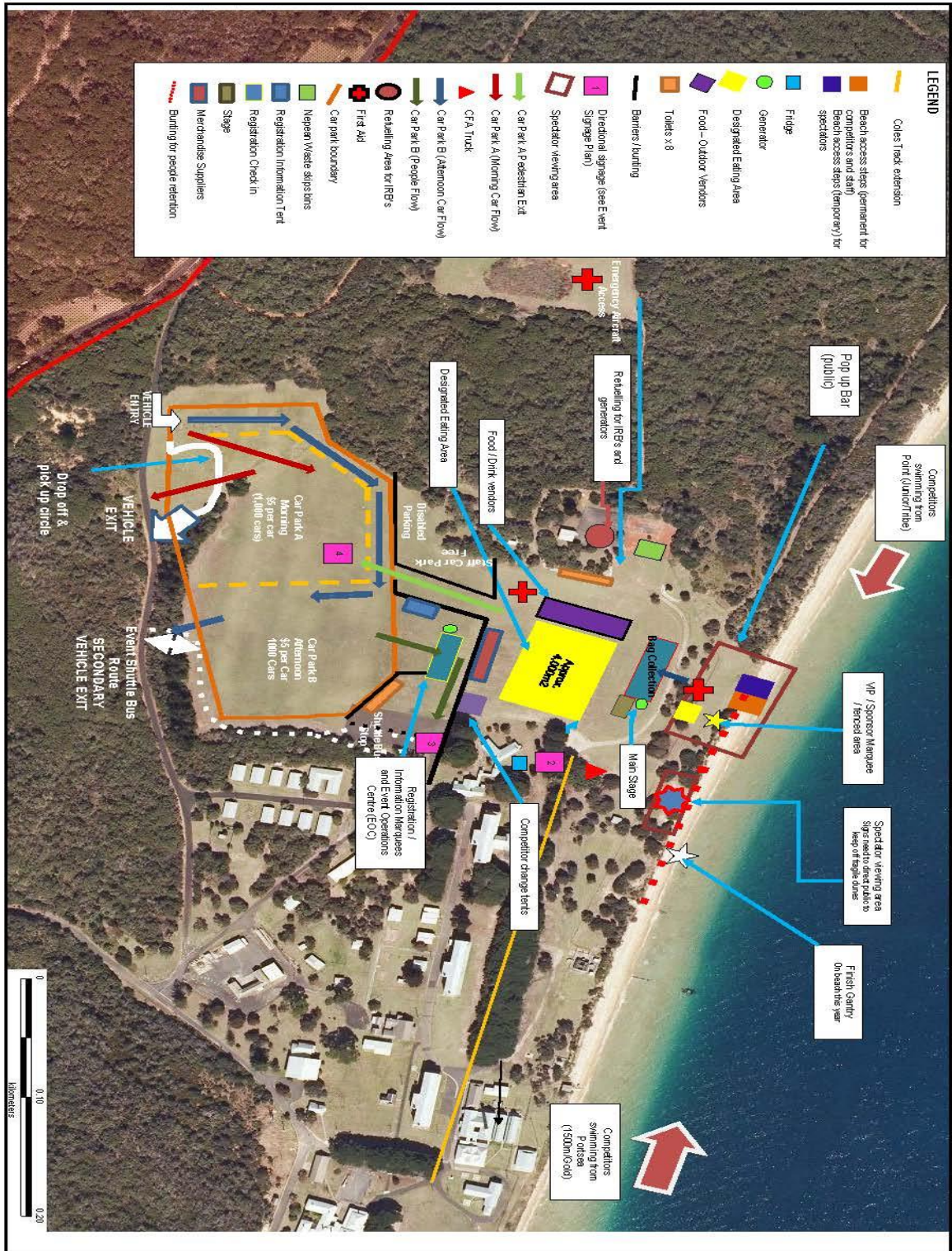
SHOP THE E-STORE AT:
[HTTPS://FUNKITA.FUNKYTRUNKS.COM](https://funkita.funkytrunks.com)
ACCESS CODE: FUNKYEXPO

COLLECT FROM FUNKY STAND AT EVENT

COVIDSAFE POLICY PREVENTS ON-THE-DAY PURCHASES. GOGGLE PURCHASES AVAILABLE.

ORDERS CLOSE MIDDAY FRIDAY 22ND

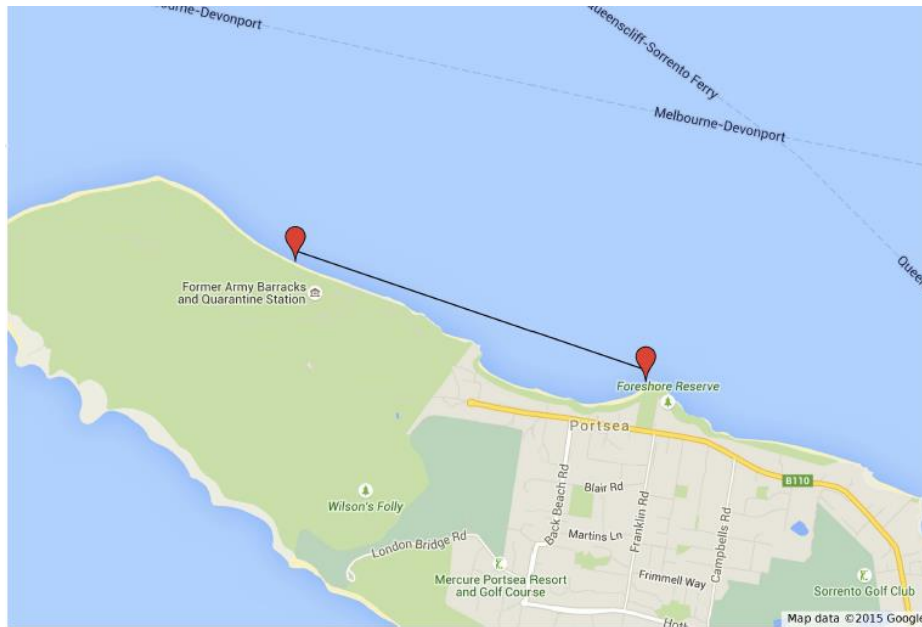
PORTSEA SWIM CLASSIC SITE PLAN 2021



PSC – 1500m



PSC – 2500m (GOLD)

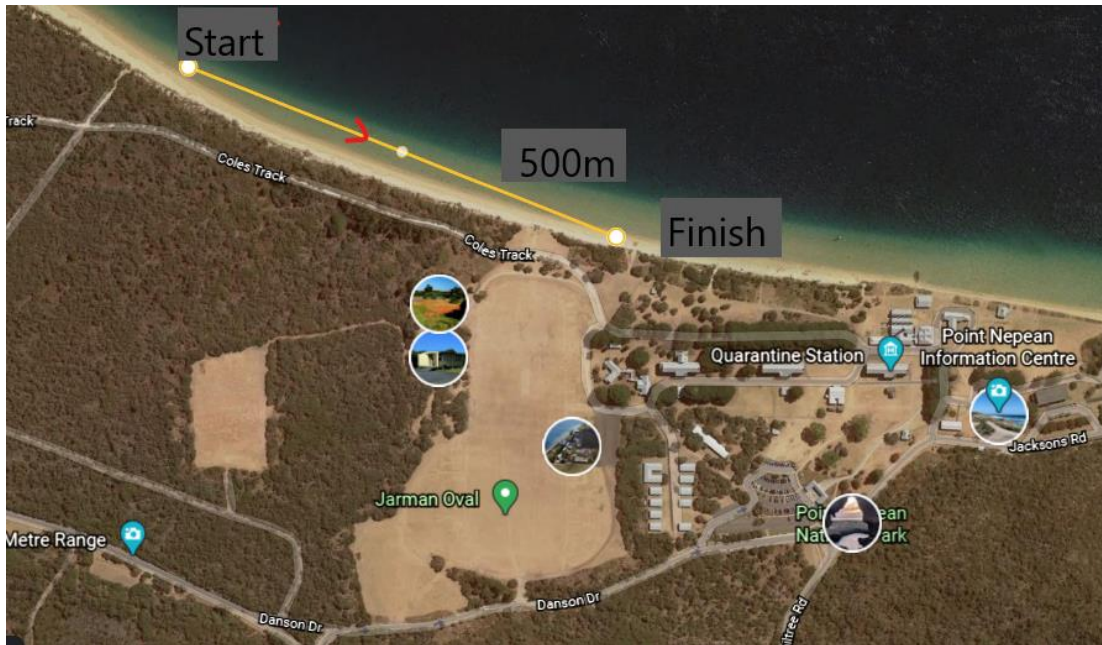


Untitled layer

- Start
- Finish
- 2.5km course

There will be 4 large buoys and 5 small buoys to mark the course from the start at Police Point to the finish at Jarman Oval (main course-Swim Classic race). Three additional buoys will be used for the Swim Classic Gold race from the east of the Portsea Hotel/pier to the main course.

Swim Classic Tribe and Junior Course Map:



- Start:** The start will be from the point approx. 500m West from the access ramp to the beach at Jarman Oval
There will be 5 small buoys to mark the nominated course
- Finish:** Same finish as will be used for the Swim Classic and Swim Classic Gold just to the East of the access ramp from Jarman Oval to the beach.
- Distance:** 500 meters